

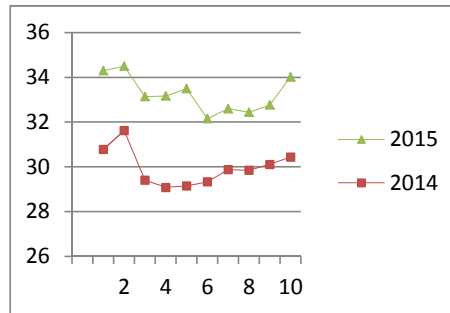
NATIONAL SOUTH AFRICAN PRICE INFORMATION FOR WEEK 10

Class Units Avg Mass Avg Purch Price Avg Selling Price Selling min Selling max From 2015/03/02 To 2015/03/08

CATTLE

Class	Units	Avg Mass	Avg Purch Price	Avg Selling Price	Selling min	Selling max
A2	4854	261.97	33.56	34.01	27.50	37.95
A3	893	264.74	33.92	33.76	31.03	37.95
AB2	318	231.34	31.07	30.33	21.00	37.95
AB3	35	290.86	31.72	30.88	26.79	37.95
B2	259	233.92	27.43	27.03	21.00	37.95
B3	29	246.69	26.38	28.10	23.50	37.95
C2	920	244.58	25.20	25.44	23.00	31.35
C3	191	272.07	25.09	25.81	23.00	31.35
	7 499					

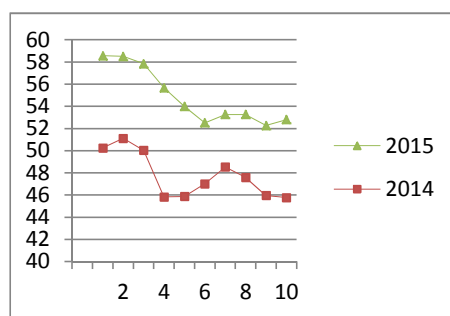
Beef A2 - Sales Price



LAMB/SHEEP

Class	Units	Avg Mass	Avg Purch Price	Avg Selling Price	Selling min	Selling max
A0	521	12.85	46.27	44.10	42.87	63.25
A1	1391	15.31	53.70	52.12	48.00	63.25
A2	7074	19.05	52.91	52.81	49.48	63.25
A3	770	20.32	54.46	54.47	50.00	63.25
A4	79	20.31	49.87	49.88	48.03	53.29
A5	9	21.84	49.27	47.97	47.00	49.00
A6	38	20.44	46.40	43.18	42.87	63.25
AB2	144	22.77	45.63	45.94	37.49	61.25
AB3	9	23.17	43.91	44.93	38.00	61.25
B2	128	25.33	36.01	38.06	35.92	61.25
B3	5	35.34	36.38	38.23	38.23	38.23
C2	636	24.34	36.91	38.88	34.00	43.78
C3	62	28.46	36.63	40.39	34.00	44.84
	10 866					

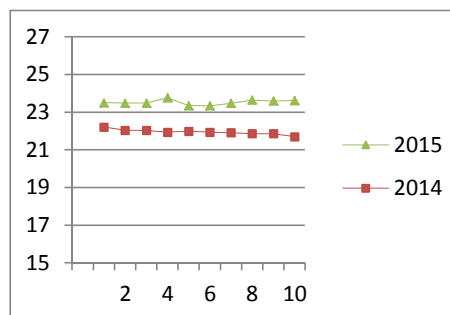
Lamb A2 - Sales Price



PIGS

Class	Units	Avg Mass	Avg Purch Price	Purch Min	Purch Max
BC	16	76.921	21.27	20.50	26.50
BO	1756	78.584	23.62	23.20	25.38
BP	3820	73.367	23.91	23.20	27.00
BR	306	81.663	22.48	22.40	24.74
BS	63	88.987	17.70	17.70	17.70
BU	1	88.9	20.60	20.60	20.60
PC	15	50	21.50	21.50	21.50
PO	38	53.423	24.63	23.81	26.50
PP	648	51.784	25.41	24.27	26.50
PR	25	44.9	22.50	22.50	22.50
SAS	120	163.66	17.26	15.29	18.00
	6 808				
Hide	Feedlot	18.17			
	Veldt	18.00			
Dorper	ea	93.00			
Merino	ea	57.50			

Baconer BO - Purchase Price



THIS INFORMATION IS PROTECTED AGAINST COPYING OR DISTRIBUTION WITHOUT PRIOR PERMISSION FROM THE RMAA BOARD.

FOR ENQUIRIES, PLEASE CONTACT RMAA AT TEL (012) 349 1237/8 or priceinformation@rmaa.co.za

Disclaimer: In no event shall the RMAA be liable for any direct, special, indirect or consequential damages, or any other damages of any kind, including but not limited to loss of use, loss of profits, or loss of data, whether in an action in contract, tort (including but not limited to negligence), or otherwise, arising out of or in any way connected with the use of this information. While the RMAA takes great care in compiling the contents of this page, it is nevertheless only meant to provide non-binding general information and cannot replace detailed individual advice to help the prospective buyer make his decision. The RMAA does not guarantee that the information on these pages is up-to-date, accurate and complete.