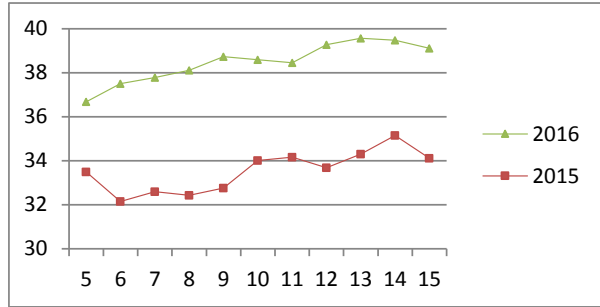


NATIONAL SOUTH AFRICAN PRICE INFORMATION FOR WEEK 15

From 2016/04/11 To 2016/04/17

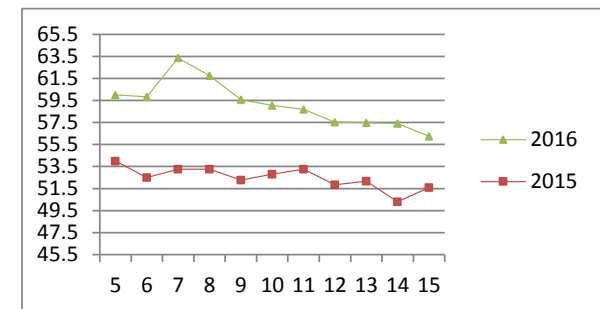
Class	Units	Avg Mass	Avg Purch Price	Avg Selling Price	Selling min	Selling max
CATTLE						
A2	11212	258.51	39.11	38.99	28.50	42.15
A3	1979	273.09	38.73	39.55	37.67	42.15
AB2	719	253.08	36.52	35.99	24.50	41.48
AB3	115	280.07	36.97	36.53	30.50	41.48
B2	658	247.76	32.50	32.10	24.50	36.50
B3	158	276.44	32.98	33.46	29.25	36.50
C2	2332	249.08	28.73	27.99	27.17	34.50
C3	671	272.79	29.00	29.03	27.12	34.50
17 844						

Beef A2 - Sales Price



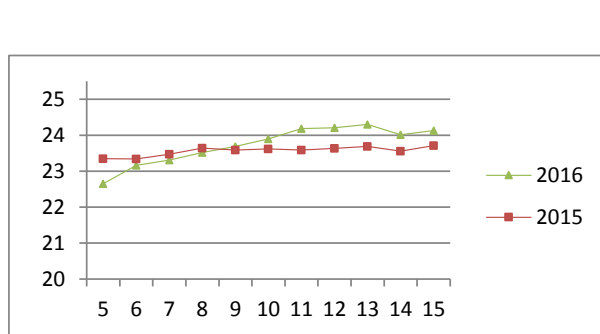
Class	Units	Avg Mass	Avg Purch Price	Avg Selling Price	Selling min	Selling max
LAMB/SHEEP						
A0	44	15.95	47.64	46.26	31.80	50.00
A1	311	15.89	54.29	54.02	40.00	63.98
A2	7964	20.93	57.30	56.21	53.00	68.00
A3	1855	21.56	57.37	56.02	53.00	68.00
A4	352	22.65	49.83	49.55	47.56	68.00
A5	47	24.09	45.92	45.73	39.49	53.76
A6	76	20.55	40.82	44.85	39.60	57.00
AB2	145	21.54	49.59	51.47	32.00	64.00
AB3	43	23.39	48.84	51.37	32.00	60.30
B2	169	22.05	43.48	44.72	33.00	67.00
B3	78	24.93	41.98	43.92	34.00	47.00
C2	1089	22.45	37.24	38.30	35.00	52.50
C3	320	24.03	37.26	38.17	34.00	52.50
12 493						

Lamb A2 - Sales Price



Class	Units	Avg Mass	Avg Purch Price	Purch Min	Purch Max
PIGS					
BP	7097	75.89	24.04	23.00	26.75
BO	3276	78.98	24.13	23.30	25.00
BR	417	104.93	23.47	16.00	25.00
BC	20	77.47	20.20	19.29	23.00
BU	4	75.09	15.66	13.00	18.15
PP	1299	47.22	24.61	20.20	27.16
PO	87	49.12	24.96	23.79	27.20
PR	4	42.85	24.74	23.10	25.50
PC	1	36.10	15.50	15.50	15.50
SAB	88	118.14	11.21	8.00	18.50
HP	2729	86.52	23.73	23.52	25.00
HO	2640	88.27	23.74	23.50	24.50
HR	660	89.95	23.16	20.30	24.00
HC	54	91.16	18.91	15.00	24.00
HU	12	93.90	18.00	13.00	21.20
HS	5	93.20	15.14	11.00	17.00
CP	864	60.91	24.83	23.65	27.75
CO	91	61.98	24.70	23.50	26.39
CR	4	63.75	23.39	23.10	24.00
CU	1	58.80	22.00	22.00	22.00
SAS	369	151.24	16.07	14.64	20.50
19 719					

Baconer BO - Purchase Price



Hide	Feedlot	14.70
	Veldt	14.75
Dorper	ea	59.55
Merino	ea	90.92

THIS INFORMATION IS PROTECTED AGAINST COPYING OR DISTRIBUTION WITHOUT PRIOR PERMISSION FROM THE RMAA BOARD.

FOR ENQUIRIES, PLEASE CONTACT RMAA AT TEL (012) 349 1237/8 or priceinformation@rmaa.co.za

Disclaimer: In no event shall the RMAA be liable for any direct, special, indirect or consequential damages, or any other damages of any kind, including but not limited to loss of use, loss of profits, or loss of data, whether in an action in contract, tort (including but not limited to negligence), or otherwise, arising out of or in any way connected with the use of this information. While the RMAA takes great care in compiling the contents of this page, it is nevertheless only meant to provide non-binding general information and cannot replace detailed individual advice to help the prospective buyer make his decision. The RMAA does not guarantee that the information on these pages is up-to-date, accurate and complete.