

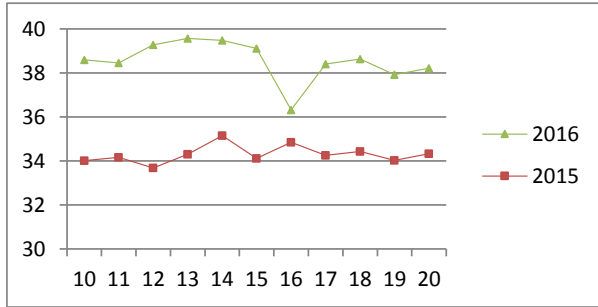
# NATIONAL SOUTH AFRICAN PRICE INFORMATION FOR WEEK 20

Class Units Avg Mass Avg Purch Price Avg Selling Price Selling min Selling max From 2016/05/16 To 2016/05/22

## CATTLE

Class	Units	Avg Mass	Avg Purch Price	Avg Selling Price	Selling min	Selling max
A2	9141	267.28	<b>38.57</b>	<b>38.21</b>	36.00	40.90
A3	1579	281.45	<b>38.31</b>	<b>38.76</b>	37.23	40.90
AB2	598	256.96	<b>36.12</b>	<b>35.19</b>	31.21	39.05
AB3	97	295.30	<b>36.56</b>	<b>35.97</b>	32.10	41.16
B2	508	252.01	<b>31.55</b>	<b>31.78</b>	27.50	38.16
B3	79	278.85	<b>31.48</b>	<b>31.29</b>	28.50	36.00
C2	2371	248.57	<b>27.43</b>	<b>28.79</b>	26.20	32.60
C3	594	277.11	<b>27.75</b>	<b>28.75</b>	26.20	32.60
14 967						

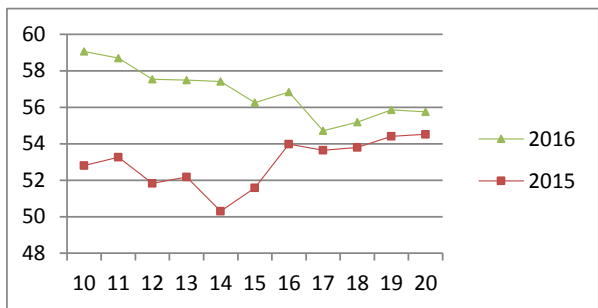
Beef A2 - Sales Price



## LAMB/SHEEP

Class	Units	Avg Mass	Avg Purch Price	Avg Selling Price	Selling min	Selling max
A0	68	13.97	<b>47.67</b>	<b>47.34</b>	33.84	55.00
A1	515	15.32	<b>55.20</b>	<b>53.59</b>	44.00	55.00
A2	9395	20.46	<b>56.83</b>	<b>55.78</b>	54.00	63.95
A3	1945	21.81	<b>56.98</b>	<b>55.73</b>	54.00	61.52
A4	437	21.50	<b>47.23</b>	<b>48.23</b>	43.93	58.00
A5	75	22.58	<b>39.58</b>	<b>40.83</b>	39.45	53.59
A6	114	21.02	<b>39.51</b>	<b>40.90</b>	38.00	43.00
AB2	109	19.61	<b>46.16</b>	<b>49.06</b>	41.20	56.50
AB3	21	24.11	<b>45.87</b>	<b>47.49</b>	45.62	50.00
B2	381	23.16	<b>45.03</b>	<b>47.52</b>	40.00	51.00
B3	14	25.70	<b>40.67</b>	<b>41.77</b>	32.34	48.00
C2	1136	23.54	<b>38.91</b>	<b>40.07</b>	38.00	47.60
C3	205	24.63	<b>38.65</b>	<b>40.26</b>	38.00	47.00
14 415						

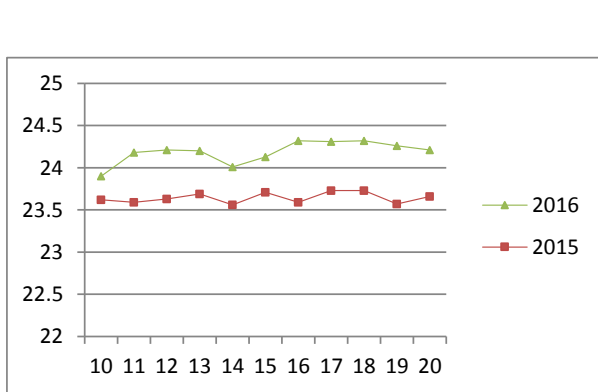
Lamb A2 - Sales Price



## PIGS

Class	Units	Avg Mass	Avg Purch Price	Purch Min	Purch Max
BP	5146	74.47	<b>24.18</b>	23.48	26.75
BO	2306	76.32	<b>24.21</b>	23.00	25.00
BR	269	77.52	<b>24.07</b>	21.00	24.48
BC	23	76.96	<b>19.72</b>	15.00	21.30
BU	16	77.78	<b>18.10</b>	15.00	18.72
BS	2	78.35	<b>15.52</b>	11.00	20.00
PP	790	48.55	<b>25.06</b>	22.00	27.17
PO	78	45.32	<b>24.89</b>	22.00	27.20
PR	16	44.31	<b>24.07</b>	22.00	25.50
PC	3	41.77	<b>18.39</b>	16.00	22.00
PU	2	44.40	<b>17.29</b>	14.00	22.00
PS	3	44.40	<b>16.00</b>	16.00	16.00
SAU	86	110.75	<b>13.50</b>	8.00	19.72
HP	3162	86.24	<b>23.97</b>	23.52	25.00
HO	4793	87.50	<b>24.01</b>	23.51	24.50
HR	1054	89.72	<b>23.39</b>	22.90	24.00
HC	94	90.39	<b>19.71</b>	15.00	24.00
HU	12	94.32	<b>18.60</b>	15.00	24.00
HS	10	94.79	<b>21.13</b>	11.00	24.00
CP	823	60.14	<b>24.95</b>	23.05	26.00
CO	119	61.17	<b>24.72</b>	23.62	26.00
CR	20	60.94	<b>24.66</b>	23.69	25.00
CC	2	59.70	<b>17.49</b>	16.00	19.00
SAS	336	146.03	<b>15.64</b>	12.00	17.30
19165					

Baconer BO - Purchase Price



Hide	Feedlot	14.30
	Veldt	14.20
Dorper	ea	54.09
Merino	ea	89.48

THIS INFORMATION IS PROTECTED AGAINST COPYING OR DISTRIBUTION WITHOUT PRIOR PERMISSION FROM THE RMAA BOARD.

FOR ENQUIRIES, PLEASE CONTACT RMAA AT TEL (012) 349 1237/8 or [priceinformation@rmaa.co.za](mailto:priceinformation@rmaa.co.za)

Disclaimer: In no event shall the RMAA be liable for any direct, special, indirect or consequential damages, or any other damages of any kind, including but not limited to loss of use, loss of profits, or loss of data, whether in an action in contract, tort (including but not limited to negligence), or otherwise, arising out of or in any way connected with the use of this information. While the RMAA takes great care in compiling the contents of this page, it is nevertheless only meant to provide non-binding general information and cannot replace detailed individual advice to help the prospective buyer make his decision. The RMAA does not guarantee that the information on these pages is up-to-date, accurate and complete.