

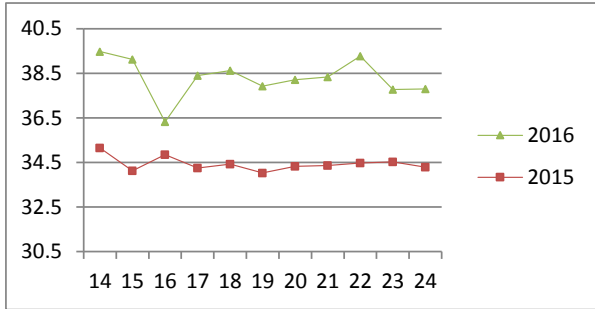
NATIONAL SOUTH AFRICAN PRICE INFORMATION FOR WEEK 24

From 2016/06/13 To 2016/06/19

CATTLE

Class	Units	Avg Mass	Avg Purch Price	Avg Selling Price	Selling min	Selling max
A2	9385	262.95	37.51	37.80	36.62	41.19
A3	1632	280.22	37.89	37.28	33.51	39.00
AB2	583	268.83	35.85	35.43	27.03	39.84
AB3	147	299.75	35.17	35.25	30.00	39.84
B2	628	250.11	31.73	31.86	26.64	35.00
B3	133	279.27	31.20	31.41	27.00	35.25
C2	2366	245.83	28.39	29.31	27.00	34.50
C3	730	278.02	28.49	29.78	27.00	34.50
15 604						

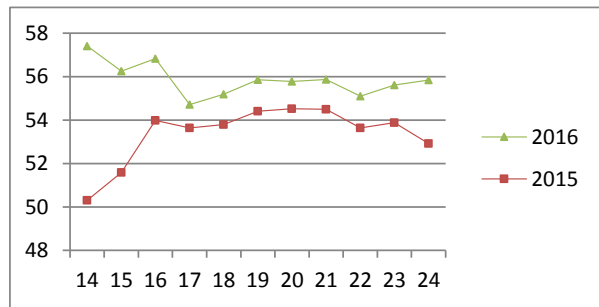
Beef A2 - Sales Price



LAMB/SHEEP

A0	172	11.80	43.01	44.65	35.02	48.00
A1	622	15.34	52.77	52.89	48.00	59.04
A2	11782	20.15	56.42	55.84	52.00	66.00
A3	2778	21.30	56.31	56.03	52.00	66.00
A4	493	21.66	48.43	47.35	42.00	55.30
A5	134	20.92	41.64	39.74	38.00	53.00
A6	162	19.00	40.63	39.47	38.00	47.65
AB2	129	20.82	44.43	49.00	42.00	55.00
AB3	59	22.19	43.69	48.83	43.67	53.00
B2	136	23.93	41.62	43.20	37.00	50.07
B3	79	24.23	40.73	41.16	37.00	48.00
C2	721	22.86	39.37	41.25	37.00	47.60
C3	252	24.73	38.77	39.38	37.00	45.00
17 519						

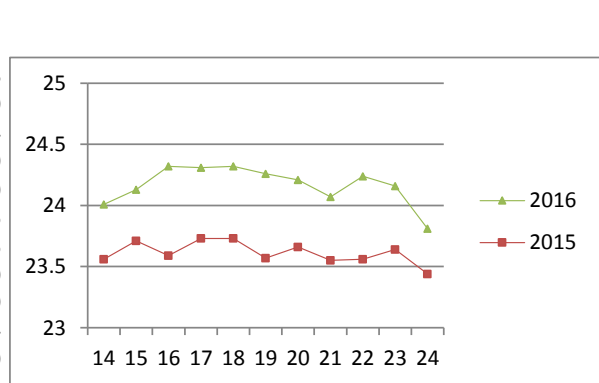
Lamb A2 - Sales Price



PIGS

		Avg Purch Price	Purch Min	Purch Max
BP	4204	74.66	23.00	24.58
BO	2770	74.49	23.00	25.00
BR	229	75.89	19.35	24.04
BC	18	76.14	19.72	22.10
BU	8	80.02	13.00	23.50
PP	486	47.72	23.00	27.05
PO	244	47.11	23.00	27.15
PR	9	33.69	23.00	25.50
PC	3	46.13	13.30	26.00
PS	3	38.30	16.00	23.44
SAB	309	104.44	8.00	18.00
HP	3128	87.25	21.00	24.53
HO	4671	88.64	21.00	24.35
HR	916	89.56	21.00	24.00
HC	92	89.69	15.00	23.50
HU	8	89.26	19.08	21.00
HS	18	95.68	11.00	23.50
CP	710	60.75	23.00	25.60
CO	540	61.32	23.00	26.00
CR	16	62.34	21.00	25.00
CC	1	82.00	22.00	22.00
CU	1	60.80	13.00	-
SAS	432	130.73	15.00	18.00
18 816				

Baconer BO - Purchase Price



Hide	Feedlot	15.25
	Veldt	15.11
Dorper	ea	55.42
Merino	ea	94.23

THIS INFORMATION IS PROTECTED AGAINST COPYING OR DISTRIBUTION WITHOUT PRIOR PERMISSION FROM THE RMAA BOARD.

FOR ENQUIRIES, PLEASE CONTACT RMAA AT TEL (012) 349 1237/8 or priceinformation@rmaa.co.za

Disclaimer: In no event shall the RMAA be liable for any direct, special, indirect or consequential damages, or any other damages of any kind, including but not limited to loss of use, loss of profits, or loss of data, whether in an action in contract, tort (including but not limited to negligence), or otherwise, arising out of or in any way connected with the use of this information. While the RMAA takes great care in compiling the contents of this page, it is nevertheless only meant to provide non-binding general information and cannot replace detailed individual advice to help the prospective buyer make his decision. The RMAA does not guarantee that the information on these pages is up-to-date, accurate and complete.