

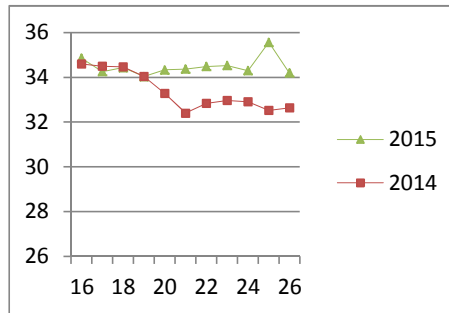
NATIONAL SOUTH AFRICAN PRICE INFORMATION FOR WEEK 26

Class Units Avg Mass Avg Purch Price Avg Selling Price Selling min Selling max From 2015/06/22 To 2015/06/28

CATTLE

Class	Units	Avg Mass	Avg Purch Price	Avg Selling Price	Selling min	Selling max
A2	5196	252.82	33.90	34.20	31.55	37.40
A3	793	271.73	33.87	33.86	28.50	37.40
AB2	263	251.83	31.39	32.19	25.73	37.40
AB3	39	272.05	31.84	33.11	26.50	37.40
B2	265	245.56	28.97	29.56	25.04	37.40
B3	34	271.51	30.29	30.00	25.93	37.40
C2	744	243.23	26.76	26.32	25.87	31.35
C3	191	286.71	27.37	26.57	24.71	27.00
	7 525					

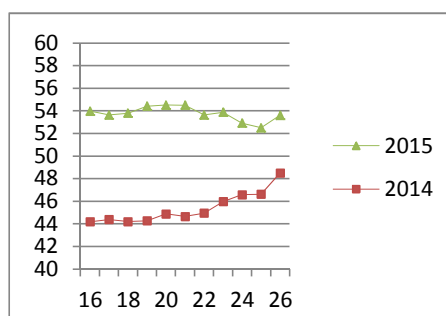
Beef A2 - Sales Price



LAMB/SHEEP

A0	119	14.11	46.52	43.17	35.00	47.00
A1	278	15.71	54.41	52.26	47.28	53.77
A2	3847	19.36	54.98	53.61	48.00	61.60
A3	785	23.30	54.19	53.32	50.00	61.60
A4	62	21.07	51.81	50.06	45.00	61.60
A5	6	23.17	43.45	48.41	45.00	61.60
A6	55	21.13	39.44	44.90	35.00	44.66
AB2	74	24.02	45.01	43.14	28.00	59.60
AB3	11	25.16	48.45	50.47	41.40	59.60
B2	217	23.29	37.91	39.73	38.00	44.00
B3	47	24.75	38.43	40.88	40.00	44.00
C2	475	22.89	37.19	38.18	33.50	39.47
C3	131	24.99	37.59	38.10	34.95	39.87
	6 107					

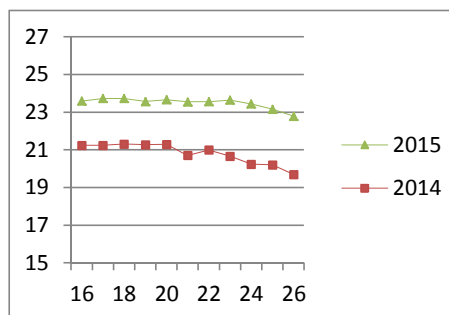
Lamb A2 - Sales Price



PIGS

Class	Units	Avg Purch Price	Purch Min	Purch Max
BC	36	71.558	16.30	26.00
BO	2553	82.419	21.20	23.90
BP	3820	75.99	21.20	25.50
BR	394	82.785	20.70	22.90
BS	72	88.79	15.70	18.00
BU	7	70.2	20.00	20.00
PC	1	47.89	24.50	24.50
PO	17	47.129	22.65	26.50
PP	582	49.11	22.84	27.00
PR	3	46.03	24.50	24.50
SAS	217	143.63	14.00	17.50
	7 702			
Hide	Feedlot	18.04		
	Veldt	17.85		
Dorper	ea	98.00		
Merino	ea	68.00		

Baconer BO - Purchase Price



THIS INFORMATION IS PROTECTED AGAINST COPYING OR DISTRIBUTION WITHOUT PRIOR PERMISSION FROM THE RMAA BOARD.

FOR ENQUIRIES, PLEASE CONTACT RMAA AT TEL (012) 349 1237/8 or priceinformation@rmaa.co.za

Disclaimer: In no event shall the RMAA be liable for any direct, special, indirect or consequential damages, or any other damages of any kind, including but not limited to loss of use, loss of profits, or loss of data, whether in an action in contract, tort (including but not limited to negligence), or otherwise, arising out of or in any way connected with the use of this information. While the RMAA takes great care in compiling the contents of this page, it is nevertheless only meant to provide non-binding general information and cannot replace detailed individual advice to help the prospective buyer make his decision. The RMAA does not guarantee that the information on these pages is up-to-date, accurate and complete.