

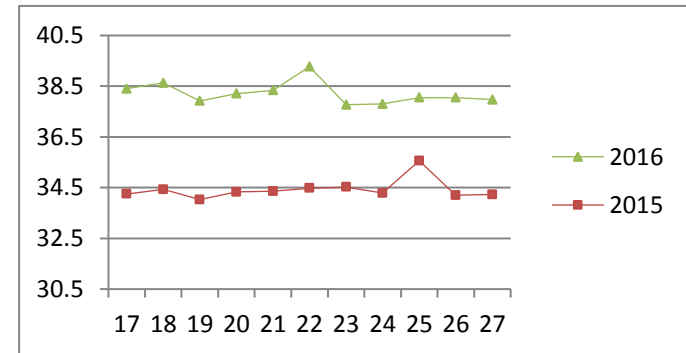
NATIONAL SOUTH AFRICAN PRICE INFORMATION FOR WEEK 27

Class Units Avg Mass Avg Purch Price Avg Selling Price Selling min Selling max From 2016/07/04 To 2016/07/10

CATTLE

Class	Units	Avg Mass	Avg Purch Price	Avg Selling Price	Selling min	Selling max
A2	10297	260.13	38.01	37.97	37.07	40.00
A3	1769	277.85	38.02	38.07	36.10	40.00
AB2	492	266.11	36.35	36.68	29.74	38.50
AB3	97	287.27	37.03	36.68	29.00	38.90
B2	658	263.26	32.10	33.51	29.00	35.80
B3	133	287.60	32.43	33.18	30.00	36.00
C2	2165	257.32	29.58	30.18	27.00	32.50
C3	592	283.42	29.84	30.80	27.50	33.14
	16 203					

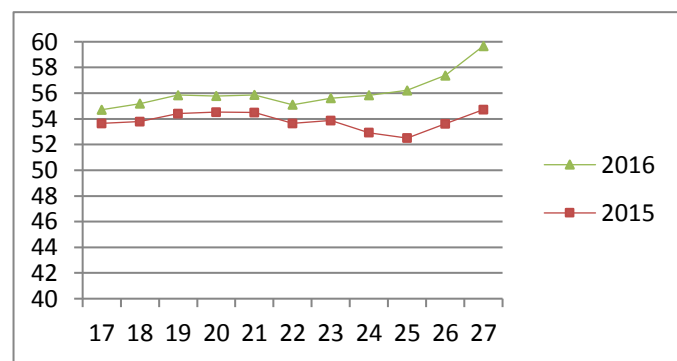
Beef A2 - Sales Price



LAMB/SHEEP

Class	Units	Avg Mass	Avg Purch Price	Avg Selling Price	Selling min	Selling max
A0	284	13.89	47.60	49.39	35.00	56.00
A1	985	16.91	60.03	58.94	54.84	62.00
A2	14546	20.65	58.02	59.68	55.00	63.96
A3	3512	22.16	58.23	59.25	55.00	62.33
A4	875	22.47	51.60	49.90	46.78	59.47
A5	250	22.02	44.17	40.86	38.00	51.59
A6	787	20.75	43.79	40.33	39.00	45.68
AB2	312	22.44	48.98	50.06	44.29	59.70
AB3	92	25.65	46.68	47.35	36.50	56.04
B2	300	27.20	42.22	43.86	38.34	51.00
B3	103	29.03	42.88	42.93	36.00	41.62
C2	1209	23.52	43.52	44.79	41.00	49.19
C3	537	26.64	43.02	47.06	41.00	53.80
	23 792					

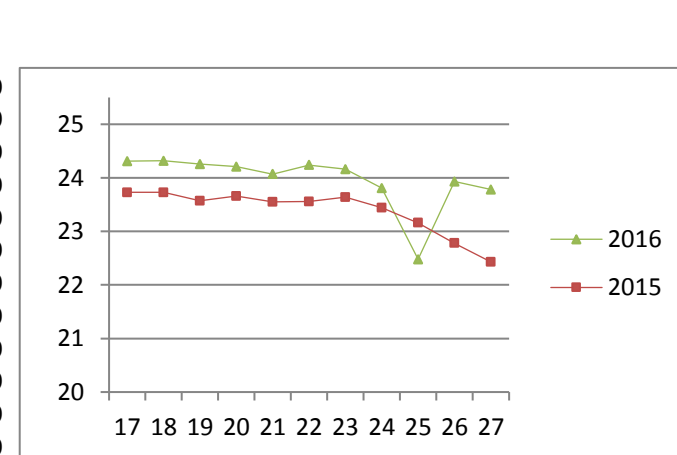
Lamb A2 - Sales Price



PIGS

Class	Units	Avg Mass	Avg Purch Price	Purch Min	Purch Max
BP	5630	74.09	23.61	22.00	26.50
BO	2176	75.55	23.78	22.00	25.00
BR	239	74.67	23.01	15.00	24.00
BC	21	74.46	20.02	16.00	22.10
BU	14	70.35	19.37	16.00	21.50
BS	1	79.20	17.00	17.00	17.00
PP	1119	47.47	24.53	22.75	26.00
PO	143	48.10	24.17	22.20	26.00
PR	31	43.54	22.47	15.00	26.00
PC	8	49.63	20.91	13.30	23.00
PU	5	50.08	22.09	21.50	23.00
PS	1	43.60	23.00	23.00	23.00
SAB	254	104.41	13.71	6.00	18.00
HP	5015	85.18	23.34	22.00	25.00
HO	5575	86.74	23.53	22.00	24.45
HR	1000	88.31	23.10	11.80	24.00
HC	80	87.19	20.67	16.50	23.50
HU	7	86.41	20.06	16.50	22.10
HS	13	93.49	19.13	9.40	23.50
CP	1173	60.90	23.76	22.10	26.50
CO	161	62.27	23.87	22.10	26.00
CR	32	61.48	23.08	20.50	25.00
CC	12	62.28	21.26	16.00	24.00
CU	1	60.10	16.00	16.00	16.00
SAS	477	144.12	16.30	15.00	18.00
	23 188				

Baconer BO - Purchase Price



Hide	Feedlot	15.35
	Veldt	15.18
Dorper	ea	50.42
Merino	ea	92.98

THIS INFORMATION IS PROTECTED AGAINST COPYING OR DISTRIBUTION WITHOUT PRIOR PERMISSION FROM THE RMAA BOARD.

FOR ENQUIRIES, PLEASE CONTACT RMAA AT TEL (012) 349 1237/8 or priceinformation@rmaa.co.za

Disclaimer: In no event shall the RMAA be liable for any direct, special, indirect or consequential damages, or any other damages of any kind, including but not limited to loss of use, loss of profits, or loss of data, whether in an action in contract, tort (including but not limited to negligence), or otherwise, arising out of or in any way connected with the use of this information. While the RMAA takes great care in compiling the contents of this page, it is nevertheless only meant to provide non-binding general information and cannot replace detailed individual advice to help the prospective buyer make his decision. The RMAA does not guarantee that the information on these pages is up-to-date, accurate and complete.