

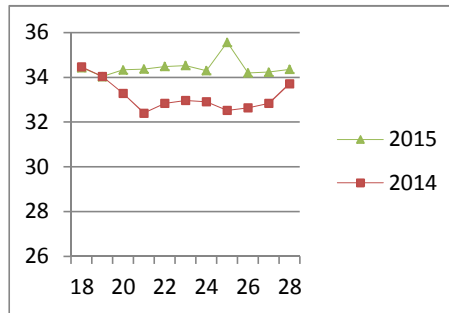
NATIONAL SOUTH AFRICAN PRICE INFORMATION FOR WEEK 28

Class Units Avg Mass Avg Purch Price Avg Selling Price Selling min Selling max From 2015/07/06 To 2015/07/12

CATTLE

Class	Units	Avg Mass	Avg Purch Price	Avg Selling Price	Selling min	Selling max
A2	4928	246.34	33.82	34.35	31.93	37.40
A3	758	263.35	33.88	33.93	32.00	37.40
AB2	271	251.45	31.91	32.28	25.73	37.40
AB3	38	264.06	31.95	32.05	26.50	37.40
B2	261	248.76	28.90	29.44	25.04	37.40
B3	44	286.91	30.16	28.92	25.93	37.40
C2	649	249.38	27.04	26.75	25.87	31.35
C3	197	289.41	27.80	27.09	24.71	31.35
	7 146					

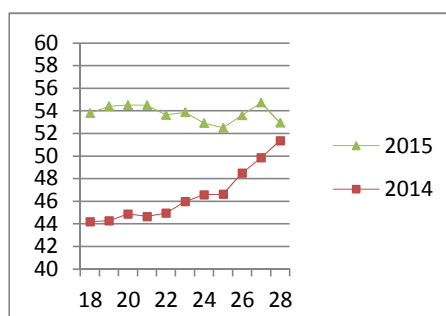
Beef A2 - Sales Price



LAMB/SHEEP

A0	222	12.73	44.51	44.84	38.00	47.00
A1	757	14.75	49.66	50.87	46.05	55.09
A2	10842	19.80	46.52	52.95	50.27	61.60
A3	1893	22.27	48.09	53.29	50.69	61.60
A4	318	21.77	46.63	47.22	44.53	61.60
A5	57	20.90	39.90	44.56	44.52	45.00
A6	129	20.88	41.74	44.90	38.00	46.23
AB2	269	33.84	41.47	39.74	28.00	59.60
AB3	71	22.49	46.38	46.20	38.00	59.60
B2	362	22.62	42.13	43.61	38.00	45.11
B3	79	25.40	40.77	44.07	40.00	45.11
C2	1031	14.15	38.25	41.56	33.00	42.90
C3	242	26.12	37.40	37.95	33.00	45.00
	16 272					

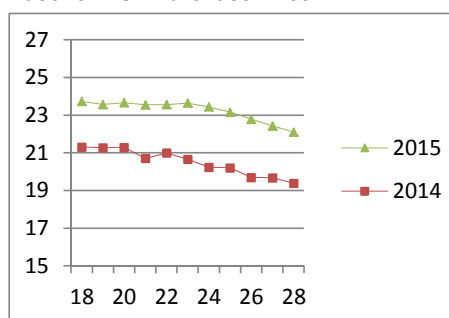
Lamb A2 - Sales Price



PIGS

Class	Units	Avg Mass	Avg Purch Price	Purch Min	Purch Max
BC	37	67.929	21.39	16.30	25.50
BO	2169	81.623	22.10	21.20	23.90
BP	3680	75.555	22.22	21.20	24.50
BR	287	81.83	21.09	20.70	22.90
BS	7	88.943	16.01	15.70	18.00
BU	11	70.018	19.49	18.60	20.00
PC	1	47.89	24.50	24.50	24.50
PO	36	51.264	22.54	22.00	26.50
PP	656	50.023	24.38	21.97	27.00
PR	2	52.6	21.73	21.73	21.73
SAS	224	141.45	15.90	14.00	17.50
	7 110				
Hide	Feedlot		17.79		
	Veldt		17.55		
Dorper	ea		96.00		
Merino	ea		70.00		

Baconer BO - Purchase Price



THIS INFORMATION IS PROTECTED AGAINST COPYING OR DISTRIBUTION WITHOUT PRIOR PERMISSION FROM THE RMAA BOARD.

FOR ENQUIRIES, PLEASE CONTACT RMAA AT TEL (012) 349 1237/8 or priceinformation@rmaa.co.za

Disclaimer: In no event shall the RMAA be liable for any direct, special, indirect or consequential damages, or any other damages of any kind, including but not limited to loss of use, loss of profits, or loss of data, whether in an action in contract, tort (including but not limited to negligence), or otherwise, arising out of or in any way connected with the use of this information. While the RMAA takes great care in compiling the contents of this page, it is nevertheless only meant to provide non-binding general information and cannot replace detailed individual advice to help the prospective buyer make his decision. The RMAA does not guarantee that the information on these pages is up-to-date, accurate and complete.