

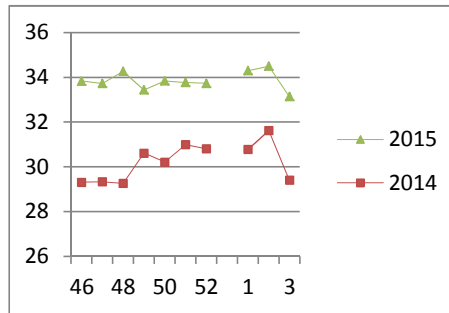
## NATIONAL SOUTH AFRICAN PRICE INFORMATION FOR WEEK 3

Class Units Avg Mass Avg Purch Price Avg Selling Price Selling min Selling max From 2015/01/13 To 2015/01/12

### CATTLE

Class	Units	Avg Mass	Avg Purch Price	Avg Selling Price	Selling min	Selling max
A2	2225	247.53	33.07	33.14	30.32	37.95
A3	369	280.65	32.70	33.85	30.46	37.95
AB2	159	249.20	30.84	30.72	27.83	37.95
AB3	167	290.42	31.07	30.41	29.23	37.95
B2	505	296.56	29.82	28.95	26.17	37.95
B3	229	297.61	29.95	29.04	28.00	37.95
C2	789	286.53	27.99	27.08	26.00	31.95
C3	454	265.61	28.10	27.07	27.00	31.35
	4 897					

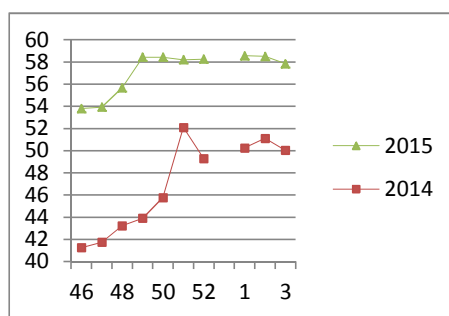
Beef A2 - Sales Price



### LAMB/SHEEP

Class	Units	Avg Mass	Avg Purch Price	Avg Selling Price	Selling min	Selling max
A0	209	13.05	46.85	50.45	46.00	51.01
A1	493	14.02	55.21	55.52	54.01	67.93
A2	5646	18.66	55.42	57.84	53.74	67.93
A3	1434	19.91	55.32	58.98	54.82	67.93
A4	35	21.98	51.02	62.24	53.26	67.93
A5	1	28.32	44.75	67.93	67.93	67.93
A6	4	17.90	46.72	51.01	46.00	51.01
AB2	93	20.76	36.63	45.80	38.00	65.93
AB3	8	27.02	40.83	42.53	38.00	65.93
B2	14	21.84	38.62	44.15	40.00	65.93
B3	12	31.40	31.05	31.97	31.97	31.97
C2	306	23.68	39.20	40.91	37.51	42.09
C3	2	27.20	38.54	37.51	37.51	37.51
	8 257					

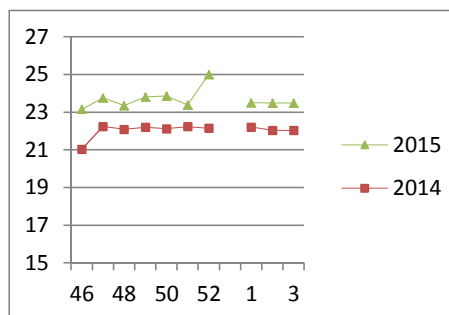
Lamb A2 - Sales Price



### PIGS

Class	Units	Avg Mass	Avg Purch Price	Purch Min	Purch Max
BC	36	75.756	21.30	20.00	24.00
BO	2287	80.18	23.58	23.00	26.86
BP	3466	74.824	24.33	23.15	26.97
BR	523	82.683	22.36	21.90	26.29
BS	2	80.4	19.27	18.70	20.00
BU	6	73.6	21.16	21.16	21.16
PC	2	49.5	22.00	22.00	22.00
PO	10	49.72	25.76	21.50	26.75
PP	500	52.123	26.54	21.50	27.00
PR	3	46.07	24.18	24.18	24.18
SAS	126	151.01	17.75	14.00	19.00
	6 961				
Hide	Feedlot	18.10			
	Veldt	18.10			
Dorper	ea	93.00			
Merino	ea	62.00			

Baconer BO - Purchase Price



THIS INFORMATION IS PROTECTED AGAINST COPYING OR DISTRIBUTION WITHOUT PRIOR PERMISSION FROM THE RMAA BOARD.

FOR ENQUIRIES, PLEASE CONTACT RMAA AT TEL (012) 349 1237/8 or [priceinformation@rmaa.co.za](mailto:priceinformation@rmaa.co.za)

Disclaimer: In no event shall the RMAA be liable for any direct, special, indirect or consequential damages, or any other damages of any kind, including but not limited to loss of use, loss of profits, or loss of data, whether in an action in contract, tort (including but not limited to negligence), or otherwise, arising out of or in any way connected with the use of this information. While the RMAA takes great care in compiling the contents of this page, it is nevertheless only meant to provide non-binding general information and cannot replace detailed individual advice to help the prospective buyer make his decision. The RMAA does not guarantee that the information on these pages is up-to-date, accurate and complete.