

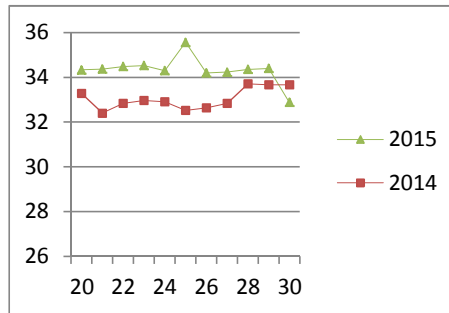
NATIONAL SOUTH AFRICAN PRICE INFORMATION FOR WEEK 30

Class Units Avg Mass Avg Purch Price Avg Selling Price Selling min Selling max From 2015/07/20 To 2015/07/26

CATTLE

Class	Units	Avg Mass	Avg Purch Price	Avg Selling Price	Selling min	Selling max
A2	6550	253.56	33.32	32.88	30.99	37.40
A3	1223	269.36	33.90	32.43	30.88	37.40
AB2	343	254.78	32.16	32.27	30.71	37.40
AB3	61	295.31	32.55	32.09	30.50	37.40
B2	325	255.29	30.30	30.26	28.14	37.40
B3	53	294.79	30.46	29.86	28.45	37.40
C2	517	255.55	27.76	26.99	24.86	31.35
C3	99	297.44	27.99	27.29	24.86	31.35
	9 171					

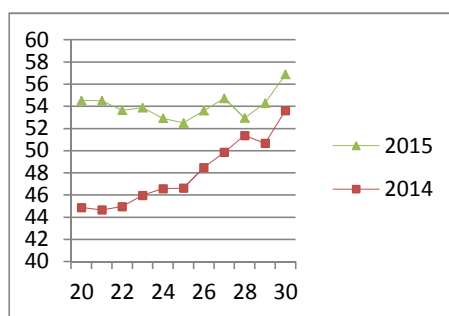
Beef A2 - Sales Price



LAMB/SHEEP

A0	228	13.84	51.85	49.72	37.53	50.65
A1	924	15.69	59.32	59.24	52.94	60.36
A2	8254	19.42	56.57	56.88	52.94	67.10
A3	1633	21.08	55.51	55.66	51.60	67.10
A4	429	21.02	47.11	47.23	45.00	67.10
A5	88	21.09	44.10	43.43	39.59	49.16
A6	181	19.60	44.18	43.19	37.53	50.65
AB2	233	20.66	49.40	50.88	42.30	65.10
AB3	74	22.60	48.45	51.43	41.75	65.10
B2	173	24.01	43.63	45.68	41.04	47.00
B3	44	27.45	43.84	45.15	41.31	47.30
C2	692	22.99	38.80	40.21	36.28	45.82
C3	172	24.98	39.01	39.06	36.28	43.61
	13 125					

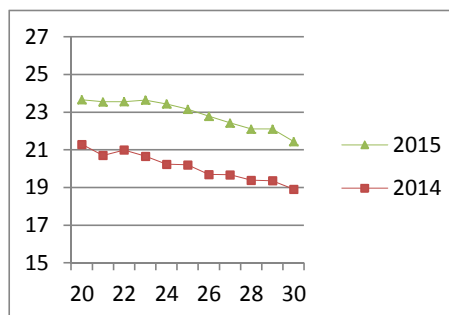
Lamb A2 - Sales Price



PIGS

Class	Units	Avg Mass	Avg Purch Price	Purch Min	Purch Max
BC	14	65.309	20.65	19.00	24.50
BO	1657	83.15	21.48	20.00	22.00
BP	3043	77.399	21.77	20.00	24.00
BR	295	85.556	20.85	20.20	20.90
BS	4	71.8	15.20	15.20	15.20
BU	4	63.325	17.03	15.00	18.10
PC	16	46.963	21.44	21.30	21.50
PO	1	55	24.50	24.50	24.50
PP	278	53.355	24.77	21.70	25.00
PR	6	48.467	21.77	20.50	22.00
SAS	211	132.75	15.60	15.00	16.50
	5 529				
Hide	Feedlot	17.00			
	Veldt	16.33			
Dorper	ea	93.33			
Merino	ea	71.67			

Baconer BO - Purchase Price



THIS INFORMATION IS PROTECTED AGAINST COPYING OR DISTRIBUTION WITHOUT PRIOR PERMISSION FROM THE RMAA BOARD.

FOR ENQUIRIES, PLEASE CONTACT RMAA AT TEL (012) 349 1237/8 or priceinformation@rmaa.co.za

Disclaimer: In no event shall the RMAA be liable for any direct, special, indirect or consequential damages, or any other damages of any kind, including but not limited to loss of use, loss of profits, or loss of data, whether in an action in contract, tort (including but not limited to negligence), or otherwise, arising out of or in any way connected with the use of this information. While the RMAA takes great care in compiling the contents of this page, it is nevertheless only meant to provide non-binding general information and cannot replace detailed individual advice to help the prospective buyer make his decision. The RMAA does not guarantee that the information on these pages is up-to-date, accurate and complete.