

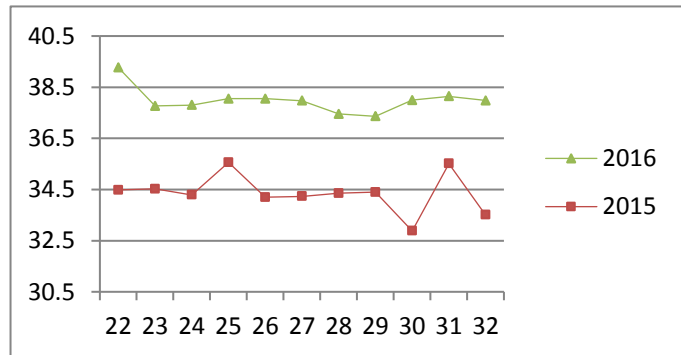
NATIONAL SOUTH AFRICAN PRICE INFORMATION FOR WEEK 32

Class Units Avg Mass Avg Purch Price Avg Selling Price Selling min Selling max From 2016/08/08 To 2016/08/14

CATTLE

Class	Units	Avg Mass	Avg Purch Price	Avg Selling Price	Selling min	Selling max
A2	10104	262.96	38.17	37.98	36.88	40.07
A3	1493	278.07	38.16	37.82	36.88	40.00
AB2	534	269.68	36.23	36.70	31.39	41.17
AB3	111	311.26	35.12	36.06	33.70	41.17
B2	519	261.61	32.77	33.40	29.24	36.10
B3	152	298.02	32.40	32.74	29.27	36.10
C2	2046	254.34	30.41	31.08	28.00	34.86
C3	646	291.60	30.39	31.51	28.00	34.86
15 605						

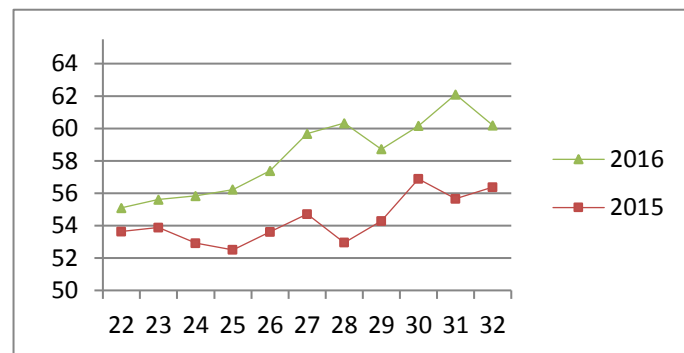
Beef A2 - Sales Price



LAMB/SHEEP

Class	Units	Avg Mass	Avg Purch Price	Avg Selling Price	Selling min	Selling max
A0	253	13.54	50.98	50.68	42.00	57.00
A1	891	16.88	61.25	61.25	52.50	64.00
A2	11587	20.78	62.52	60.19	55.00	69.41
A3	2274	22.87	62.20	60.19	54.00	68.37
A4	605	23.80	53.59	52.30	47.61	55.32
A5	176	22.69	48.42	46.30	41.06	55.31
A6	318	22.54	48.49	46.53	40.89	51.48
AB2	168	21.92	54.84	53.91	46.42	59.70
AB3	25	24.86	54.40	53.12	45.88	58.00
B2	203	26.86	48.20	50.78	43.41	56.00
B3	52	28.98	49.90	51.93	45.80	56.00
C2	931	25.41	49.36	51.21	43.79	54.03
C3	288	28.18	47.69	47.02	38.14	54.00
17 771						

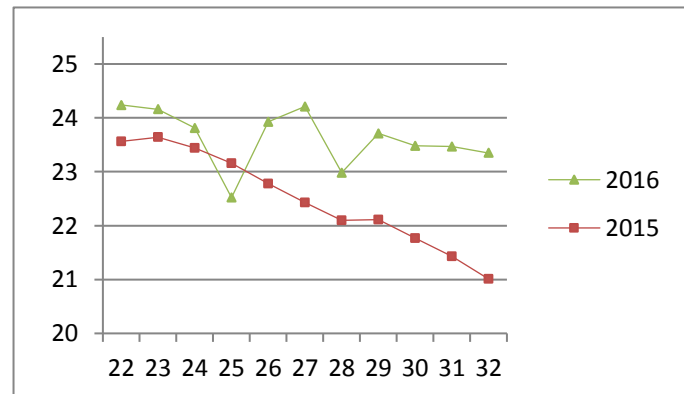
Lamb A2 - Sales Price



PIGS

Class	Units	Avg Mass	Avg Purch Price	Purch Min	Purch Max	
BP	6270	75.46	23.38	22.00	26.50	
BO	2429	78.49	23.35	22.00	25.00	
BR	201	79.91	22.62	21.20	25.00	
BC	17	78.16	20.50	19.81	22.50	
BU	5	76.70	22.92	20.20	24.00	
BS	2	85.80	22.32	22.10	22.50	
PP	1908	51.59	24.60	22.01	28.00	
PO	147	50.11	23.63	22.00	26.00	
PR	17	44.90	23.64	22.30	25.00	
PC	4	52.95	21.66	21.50	22.10	
PS	2	53.85	17.00	17.00	17.00	
SAB	563	105.46	12.46	10.00	16.50	
HP	3514	86.94	23.10	21.00	23.82	
HO	4786	88.03	23.05	21.00	24.00	
HR	901	89.75	22.43	15.00	23.50	
HC	70	92.11	20.27	17.62	23.50	
HU	8	90.21	19.25	18.27	21.00	
HS	5	94.60	21.85	14.18	23.50	
CP	1436	63.91	23.32	22.10	26.00	
CO	329	70.90	23.11	23.00	26.00	
CR	27	72.34	22.61	22.50	23.00	
CC	1	70.80	22.10	22.10	22.10	
CU	1	70.80	22.10	22.10	22.10	
SAS	931	137.45	15.97	14.27	17.30	
23 574						

Baconer BO - Purchase Price



Hide	Feedlot	15.45
	Veldt	15.47
Dorper	ea	38.77
Merino	ea	78.13

THIS INFORMATION IS PROTECTED AGAINST COPYING OR DISTRIBUTION WITHOUT PRIOR PERMISSION FROM THE RMAA BOARD.

FOR ENQUIRIES, PLEASE CONTACT RMAA AT TEL (012) 349 1237/8 or priceinformation@rmaa.co.za

Disclaimer: In no event shall the RMAA be liable for any direct, special, indirect or consequential damages, or any other damages of any kind, including but not limited to loss of use, loss of profits, or loss of data, whether in an action in contract, tort (including but not limited to negligence), or otherwise, arising out of or in any way connected with the use of this information. While the RMAA takes great care in compiling the contents of this page, it is nevertheless only meant to provide non-binding general information and cannot replace detailed individual advice to help the prospective buyer make his decision. The RMAA does not guarantee that the information on these pages is up-to-date, accurate and complete.