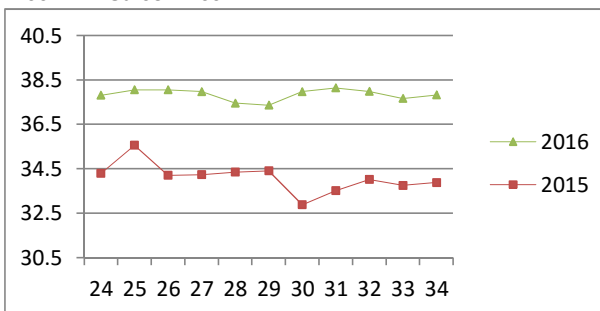


# NATIONAL SOUTH AFRICAN PRICE INFORMATION FOR WEEK 34

From 2016/08/22 To 2016/08/28

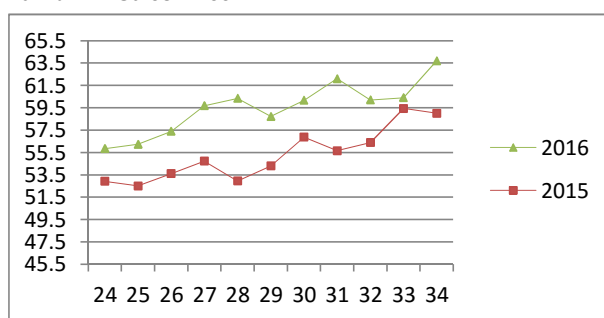
Class	Units	Avg Mass	Avg Purch Price	Avg Selling Price	Selling min	Selling max
<b>CATTLE</b>						
A2	12613	258.91	<b>38.31</b>	<b>37.82</b>	36.00	41.11
A3	1684	275.04	<b>37.79</b>	<b>37.85</b>	36.50	40.00
AB2	559	267.57	<b>36.70</b>	<b>36.23</b>	31.00	40.35
AB3	117	290.63	<b>36.24</b>	<b>36.28</b>	32.00	39.80
B2	462	250.93	<b>32.97</b>	<b>33.66</b>	30.00	40.35
B3	102	291.39	<b>33.31</b>	<b>34.27</b>	30.25	40.35
C2	2025	252.00	<b>31.40</b>	<b>31.61</b>	28.00	34.50
C3	497	286.29	<b>31.43</b>	<b>31.98</b>	28.00	34.50
18,059						

**Beef A2 - Sales Price**



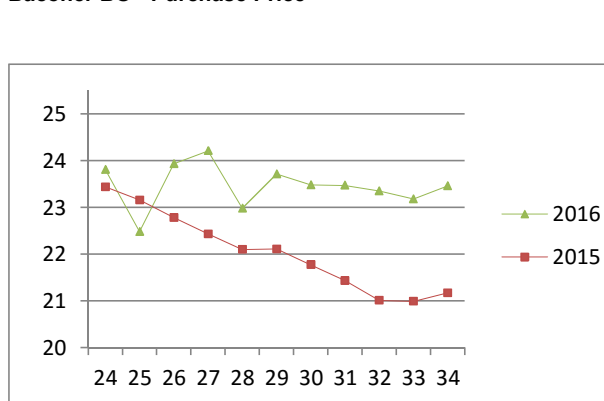
Class	Units	Avg Mass	Avg Purch Price	Avg Selling Price	Selling min	Selling max
<b>LAMB/SHEEP</b>						
A0	261	14.33	<b>51.99</b>	<b>52.93</b>	38.00	55.21
A1	799	17.00	<b>61.60</b>	<b>62.07</b>	51.73	68.00
A2	10658	20.95	<b>59.56</b>	<b>63.69</b>	58.00	70.43
A3	1690	24.13	<b>58.07</b>	<b>62.60</b>	58.00	71.17
A4	325	25.55	<b>51.77</b>	<b>55.49</b>	53.41	69.25
A5	76	25.16	<b>51.13</b>	<b>54.93</b>	42.05	62.00
A6	96	27.32	<b>50.40</b>	<b>55.64</b>	48.39	59.74
AB2	109	24.40	<b>53.29</b>	<b>56.58</b>	42.42	68.49
AB3	31	27.17	<b>55.83</b>	<b>57.62</b>	40.00	69.00
B2	140	25.51	<b>50.14</b>	<b>52.35</b>	42.00	56.86
B3	25	29.26	<b>49.98</b>	<b>52.18</b>	47.00	57.56
C2	478	25.72	<b>50.44</b>	<b>51.08</b>	33.88	55.00
C3	101	28.63	<b>48.96</b>	<b>48.84</b>	40.00	55.00
14,789						

**Lamb A2 - Sales Price**



Class	Units	Avg Mass	Avg Purch Price	Purch Min	Purch Max
<b>PIGS</b>					
BP	5635	74.87	<b>24.01</b>	22.00	34.20
BO	2109	76.16	<b>23.46</b>	22.00	25.00
BR	326	75.97	<b>22.58</b>	21.00	25.00
BC	20	75.44	<b>20.33</b>	19.00	22.50
BU	8	71.99	<b>20.65</b>	17.95	22.50
BS	1	67.30	<b>17.00</b>	17.00	17.00
PP	1882	53.18	<b>24.53</b>	19.50	26.00
PO	85	51.41	<b>24.29</b>	19.50	26.00
PR	16	50.22	<b>23.51</b>	22.00	26.00
PC	2	53.20	<b>24.50</b>	24.50	24.50
PU	3	61.50	<b>24.00</b>	24.00	24.00
PS	2	32.25	<b>23.00</b>	23.00	23.00
SAB	794	106.10	<b>12.65</b>	10.00	17.30
HP	2299	88.99	<b>22.30</b>	21.00	32.80
HO	3439	91.00	<b>22.14</b>	21.00	23.50
HR	527	91.99	<b>21.65</b>	15.00	22.40
HC	29	93.87	<b>20.28</b>	11.40	21.00
HU	3	90.03	<b>19.76</b>	17.00	21.00
CP	458	60.55	<b>23.26</b>	22.10	26.00
CO	575	76.94	<b>23.84</b>	22.10	26.00
CR	162	82.31	<b>23.61</b>	22.80	26.00
CC	7	86.86	<b>23.50</b>	23.50	23.50
CS	1	97.80	<b>23.50</b>	23.50	23.50
SAS	580	153.85	<b>15.05</b>	12.00	17.30
18,963					

**Baconer BO - Purchase Price**



Hide	Feedlot	<b>15.50</b>
	Veldt	<b>15.41</b>
Dorper	ea	<b>35.82</b>
Merino	ea	<b>76.98</b>

**THIS INFORMATION IS PROTECTED AGAINST COPYING OR DISTRIBUTION WITHOUT PRIOR PERMISSION FROM THE RMAA BOARD.**

**FOR ENQUIRIES, PLEASE CONTACT RMAA AT TEL (012) 349 1237/8 or [priceinformation@rmaa.co.za](mailto:priceinformation@rmaa.co.za)**

Disclaimer: In no event shall the RMAA be liable for any direct, special, indirect or consequential damages, or any other damages of any kind, including but not limited to loss of use, loss of profits, or loss of data, whether in an action in contract, tort (including but not limited to negligence), or otherwise, arising out of or in any way connected with the use of this information. While the RMAA takes great care in compiling the contents of this page, it is nevertheless only meant to provide non-binding general information and cannot replace detailed individual advice to help the prospective buyer make his decision. The RMAA does not guarantee that the information on these pages is up-to-date, accurate and complete.