

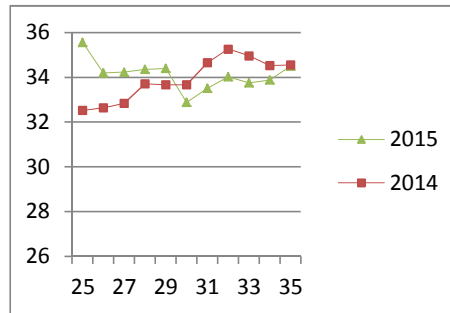
## NATIONAL SOUTH AFRICAN PRICE INFORMATION FOR WEEK 35

Class Units Avg Mass Avg Purch Price Avg Selling Price Selling min Selling max From 2015/08/25 To 2015/08/30

### CATTLE

Class	Units	Avg Mass	Avg Purch Price	Avg Selling Price	Selling min	Selling max
A2	9068	249.40	<b>34.71</b>	<b>34.50</b>	31.77	35.92
A3	1434	265.31	<b>34.86</b>	<b>34.34</b>	33.50	35.92
AB2	545	266.92	<b>33.03</b>	<b>33.35</b>	29.00	37.62
AB3	73	289.22	<b>33.36</b>	<b>33.62</b>	31.00	37.62
B2	474	261.76	<b>31.06</b>	<b>30.99</b>	26.50	37.62
B3	63	295.88	<b>30.84</b>	<b>31.18</b>	27.55	37.62
C2	1210	254.79	<b>28.70</b>	<b>27.85</b>	25.67	33.07
C3	264	301.00	<b>28.84</b>	<b>27.73</b>	26.50	33.07
13 131						

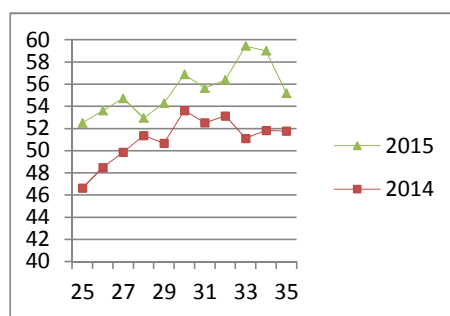
Beef A2 - Sales Price



### LAMB/SHEEP

A0	227	12.13	<b>46.08</b>	<b>44.11</b>	39.70	50.00
A1	966	13.72	<b>53.92</b>	<b>55.16</b>	51.45	59.10
A2	8481	18.64	<b>51.58</b>	<b>55.17</b>	53.31	59.10
A3	1980	21.57	<b>54.33</b>	<b>55.59</b>	53.10	59.10
A4	363	21.12	<b>43.52</b>	<b>48.24</b>	45.95	59.10
A5	137	22.34	<b>46.04</b>	<b>46.71</b>	39.86	59.10
A6	116	20.79	<b>44.46</b>	<b>43.02</b>	39.70	50.00
AB2	112	21.72	<b>48.71</b>	<b>49.91</b>	44.08	59.00
AB3	70	22.32	<b>44.58</b>	<b>47.82</b>	43.48	59.00
B2	86	24.49	<b>44.48</b>	<b>45.08</b>	38.96	48.00
B3	21	27.24	<b>44.44</b>	<b>45.28</b>	41.77	48.00
C2	692	21.94	<b>43.97</b>	<b>44.98</b>	36.67	45.97
C3	160	28.19	<b>42.44</b>	<b>43.28</b>	37.88	46.39
13 411						

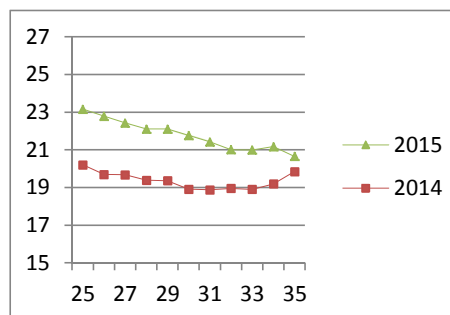
Lamb A2 - Sales Price



### PIGS

Class	Units	Avg Mass	Avg Purch Price	Purch Min	Purch Max
BC	8	73.294	<b>21.13</b>	18.25	23.50
BO	2906	81.971	<b>20.65</b>	20.00	21.27
BP	3992	77.774	<b>20.80</b>	19.25	22.00
BR	277	62.856	<b>19.90</b>	19.09	20.18
BS	54	88.5	<b>14.50</b>	14.50	14.50
BU	2	64.6	<b>19.57</b>	17.40	21.25
PC	6	45.417	<b>20.86</b>	20.50	22.50
PO	9	52.157	<b>22.19</b>	20.50	23.50
PP	143	49.325	<b>22.22</b>	20.50	23.50
PR	10	45.53	<b>22.16</b>	19.50	22.50
SAS	234	126.16	<b>15.89</b>	14.50	16.80
7 641					
Hide	Feedlot	14.07			
	Veldt	14.07			
Dorper	ea	82.50			
Merino	ea	80.00			

Baconer BO - Purchase Price



THIS INFORMATION IS PROTECTED AGAINST COPYING OR DISTRIBUTION WITHOUT PRIOR PERMISSION FROM THE RMAA BOARD.

FOR ENQUIRIES, PLEASE CONTACT RMAA AT TEL (012) 349 1237/8 or [priceinformation@rmaa.co.za](mailto:priceinformation@rmaa.co.za)

Disclaimer: In no event shall the RMAA be liable for any direct, special, indirect or consequential damages, or any other damages of any kind, including but not limited to loss of use, loss of profits, or loss of data, whether in an action in contract, tort (including but not limited to negligence), or otherwise, arising out of or in any way connected with the use of this information. While the RMAA takes great care in compiling the contents of this page, it is nevertheless only meant to provide non-binding general information and cannot replace detailed individual advice to help the prospective buyer make his decision. The RMAA does not guarantee that the information on these pages is up-to-date, accurate and complete.