

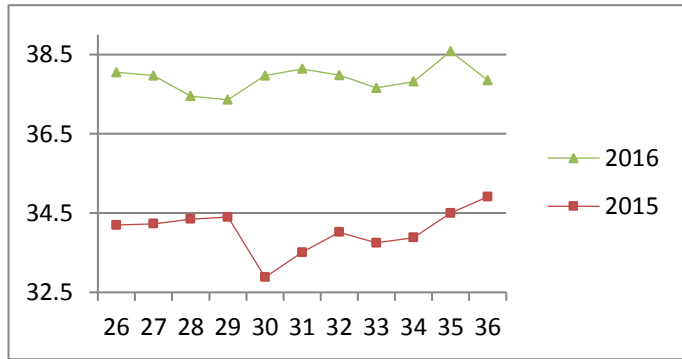
NATIONAL SOUTH AFRICAN PRICE INFORMATION FOR WEEK 36

Class Units Avg Mass Avg Purch Price Avg Selling Price Selling min Selling max From 2016/09/05 To 2016/09/11

CATTLE

Class	Units	Avg Mass	Avg Purch Price	Avg Selling Price	Selling min	Selling max
A2	11394	257.24	38.33	37.85	36.50	43.00
A3	1370	272.60	38.35	38.14	36.50	40.42
AB2	523	259.44	35.39	36.42	30.26	39.83
AB3	112	284.93	35.11	36.68	31.00	39.90
B2	495	259.42	33.52	33.99	29.95	39.80
B3	109	282.64	33.19	34.39	31.00	39.80
C2	2219	249.71	32.08	32.66	29.00	36.48
C3	664	288.95	32.18	32.68	29.00	36.72
16 886						

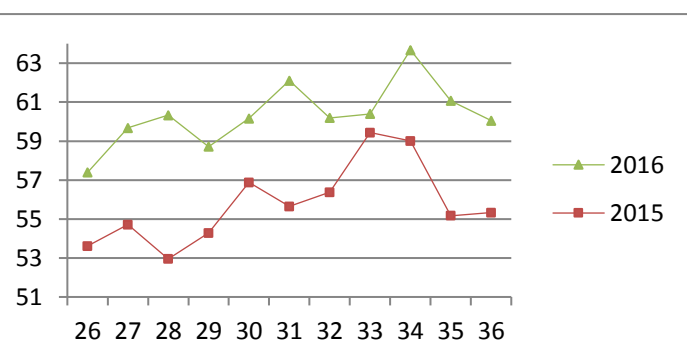
Beef A2 - Sales Price



LAMB/SHEEP

Class	Units	Avg Mass	Avg Purch Price	Avg Selling Price	Selling min	Selling max
A0	227	14.85	51.68	52.91	40.00	55.00
A1	793	16.78	59.95	60.01	54.08	62.33
A2	9837	21.09	62.16	60.05	55.55	64.37
A3	1757	23.17	62.09	58.69	55.67	63.64
A4	397	23.06	52.19	51.74	47.70	57.64
A5	76	23.34	47.84	45.94	38.13	64.00
A6	62	20.82	47.95	45.70	40.08	50.67
AB2	148	22.77	56.78	56.35	46.66	65.17
AB3	40	24.52	54.75	56.57	45.50	69.00
B2	315	25.94	48.24	50.66	42.00	58.85
B3	74	28.89	48.76	50.40	42.00	58.00
C2	418	25.84	49.91	51.82	46.17	57.00
C3	128	28.47	49.90	50.83	40.00	57.00
14 272						

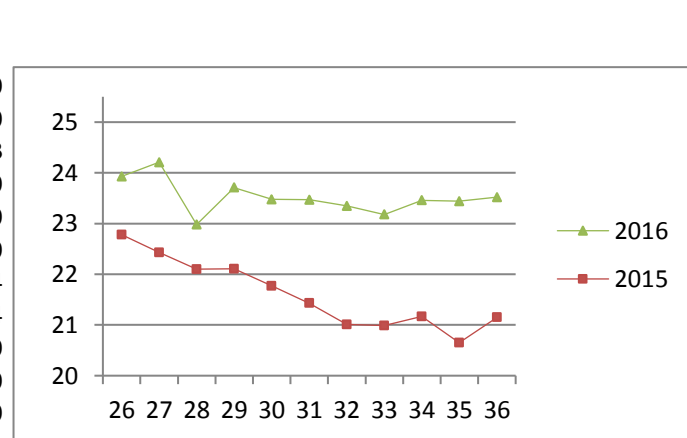
Lamb A2 - Sales Price



PIGS

Class	Units	Avg Mass	Avg Purch Price	Purch Min	Purch Max
BP	6155	74.0567	23.35	22.30	25.50
BO	3066	75.2493	23.52	20.89	24.00
BR	189	77.1414	22.53	18.89	23.33
BC	31	75.6929	20.63	17.00	24.00
BU	7	76.3257	20.39	17.00	24.00
BS	2	86.80	21.36	20.00	22.50
PP	2338	53.06	24.44	20.49	25.54
PO	380	47.80	26.40	24.30	26.94
PR	13	46.97	17.63	10.00	24.50
PC	5	46.842	14.15	10.00	20.00
PU	1	51.80	24.00	24.00	24.00
PS	5	34.74	23.36	23.36	23.36
SAB	559	104.286	12.24	8.00	17.30
HP	4348	84.63	23.18	22.30	23.83
HO	5024	85.74	23.14	22.26	23.66
HR	858	87.38	22.58	12.10	23.50
HC	69	89.26	19.23	11.40	22.10
HU	9	88.46	18.75	18.59	20.00
HS	3	95.13	12.21	9.40	17.64
CP	929	61.29	23.43	22.40	25.50
CO	576	60.82	24.08	22.40	25.00
CR	23	62.76	22.38	17.50	23.50
CC	1	60.92	18.77	18.77	18.77
SAS	774	153.01	15.27	14.27	17.50
23 365					

Baconer BO - Purchase Price



Hide	Feedlot	15.47
	Veldt	15.40
Dorper	ea	30.73
Merino	ea	75.73

THIS INFORMATION IS PROTECTED AGAINST COPYING OR DISTRIBUTION WITHOUT PRIOR PERMISSION FROM THE RMAA BOARD.

FOR ENQUIRIES, PLEASE CONTACT RMAA AT TEL (012) 349 1237/8 or priceinformation@rmaa.co.za

Disclaimer: In no event shall the RMAA be liable for any direct, special, indirect or consequential damages, or any other damages of any kind, including but not limited to loss of use, loss of profits, or loss of data, whether in an action in contract, tort (including but not limited to negligence), or otherwise, arising out of or in any way connected with the use of this information. While the RMAA takes great care in compiling the contents of this page, it is nevertheless only meant to provide non-binding general information and cannot replace detailed individual advice to help the prospective buyer make his decision. The RMAA does not guarantee that the information on these pages is up-to-date, accurate and complete.