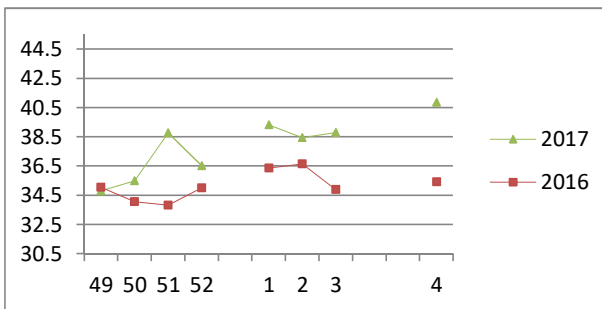


NATIONAL SOUTH AFRICAN PRICE INFORMATION FOR WEEK 4

From 2017/01/23 To 2017/01/29

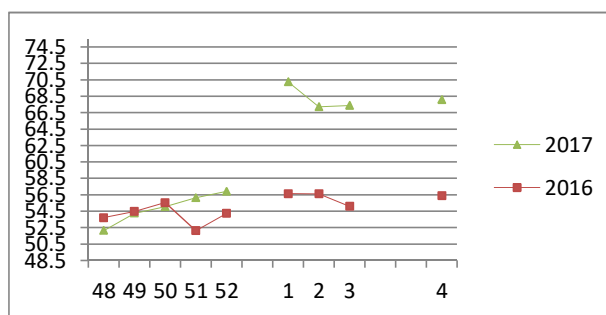
Class	Units	Avg Mass	Avg Purch Price	Avg Selling Price	Selling min	Selling max
CATTLE						
A2	12466	262.22	40.49	40.84	38.07	44.15
A3	1582	281.45	40.45	41.09	38.00	44.15
AB2	501	265.41	39.12	39.27	31.50	44.23
AB3	97	270.83	38.73	38.96	34.00	41.50
B2	325	244.16	35.87	37.51	32.50	44.26
B3	88	282.22	35.69	37.06	32.50	39.50
C2	1545	246.58	34.83	35.07	27.59	37.50
C3	371	281.69	34.94	35.58	32.50	38.00
	16,975					

Beef A2 - Sales Price



Class	Units	Avg Mass	Avg Purch Price	Avg Selling Price	Selling min	Selling max
LAMB/SHEEP						
A0	404	14.54	60.22	59.67	45.32	60.47
A1	1483	16.34	67.79	67.80	55.00	72.00
A2	10350	19.68	69.10	68.09	65.29	75.52
A3	1962	22.15	69.56	67.08	65.21	76.42
A4	247	23.46	58.19	58.69	57.50	70.00
A5	35	22.31	49.25	52.93	45.89	67.00
A6	64	21.98	50.42	50.46	46.93	67.00
AB2	372	21.59	61.65	59.35	49.00	65.00
AB3	159	24.51	62.20	56.70	51.51	64.25
B2	336	23.98	52.31	54.75	49.00	60.00
B3	85	28.65	50.66	52.71	48.00	58.00
C2	883	24.30	51.10	52.57	47.49	58.00
C3	259	27.74	51.21	52.67	48.00	55.85
	16,639					

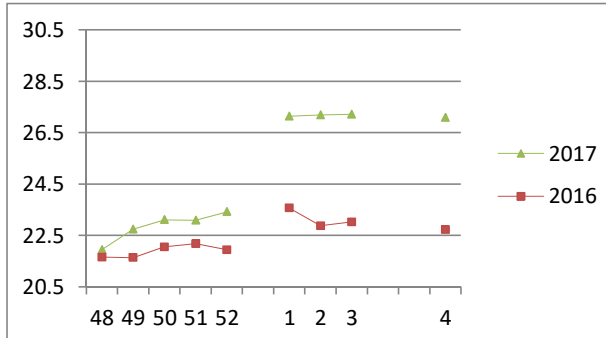
Lamb A2 - Sales Price



Class	Units	Avg Mass	Avg Purch Price	Purch Min	Purch Max
PIGS					
BP	7230	71.27	26.39	22.30	31.00
BO	2940	74.23	27.08	22.30	31.00
BR	285	75.72	26.22	28.53	31.00
BC	29	73.64	23.81	21.26	31.00
BU	8	74.07	19.30	18.79	29.00
BS	6	81.68	17.40	19.00	22.00
PP	2932	52.87	27.04	22.50	31.75
PO	266	52.50	27.98	25.50	31.16
PR	28	47.42	25.38	29.20	30.50
PC	4	49.40	25.18	24.50	27.00
PU	2	47.65	10.00	10.00	10.00
PS	3	47.48	22.50	21.00	25.00
SAB	70	125.07	16.23	8.00	22.00
HP	2692	85.89	26.07	22.30	27.99
HO	3104	87.26	25.94	22.30	30.50
HR	662	88.29	25.33	25.59	30.00
HC	76	90.61	20.90	15.00	25.50
HU	12	88.98	18.10	13.00	25.50
HS	6	91.72	17.10	11.00	25.50
CP	2428	67.75	27.77	22.40	31.25
CO	949	71.38	27.47	21.09	30.00
CR	75	71.46	27.13	25.70	27.50
CC	16	70.15	25.60	13.13	27.50
CU	4	67.95	25.89	20.07	27.50
CS	1	77.00	27.50	27.50	27.50
SAS	523	160.27	17.86	15.53	20.80
	24,351				

Hide	Feedlot	15.96
	Veldt	15.96
Dorper	ea	45.25
Merino	ea	89.06

Baconer BO - Purchase Price



THIS INFORMATION IS PROTECTED AGAINST COPYING OR DISTRIBUTION WITHOUT PRIOR PERMISSION FROM THE RMAA BOARD.

FOR ENQUIRIES, PLEASE CONTACT RMAA AT TEL (012) 349 1237/8 or priceinformation@rmaa.co.za

Disclaimer: In no event shall the RMAA be liable for any direct, special, indirect or consequential damages, or any other damages of any kind, including but not limited to loss of use, loss of profits, or loss of data, whether in an action in contract, tort (including but not limited to negligence), or otherwise, arising out of or in any way connected with the use of this information. While the RMAA takes great care in compiling the contents of this page, it is nevertheless only meant to provide non-binding general information and cannot replace detailed individual advice to help the prospective buyer make his decision. The RMAA does not guarantee that the information on these pages is up-to-date, accurate and complete.