

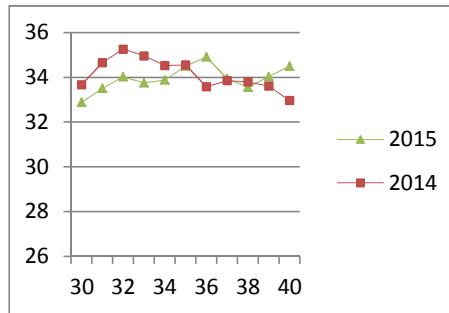
NATIONAL SOUTH AFRICAN PRICE INFORMATION FOR WEEK 40

Class Units Avg Mass Avg Purch Price Avg Selling Price Selling min Selling max From 2015/09/28 To 2015/10/04

CATTLE

Class	Units	Avg Mass	Avg Purch Price	Avg Selling Price	Selling min	Selling max
A2	11350	254.61	34.71	34.49	32.88	35.93
A3	1162	265.75	35.12	34.53	33.45	35.78
AB2	423	269.06	33.14	33.20	27.50	35.78
AB3	50	286.49	32.33	33.52	31.51	35.78
B2	326	258.66	30.43	30.47	26.10	33.68
B3	45	305.24	29.84	30.11	29.50	33.68
C2	1109	253.51	28.94	28.51	26.34	31.25
C3	150	295.13	29.18	28.75	26.49	31.25
14 615						

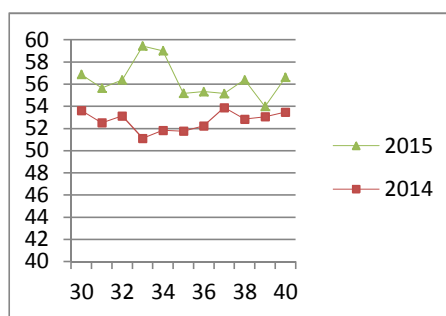
Beef A2 - Sales Price



LAMB/SHEEP

Class	Units	Avg Mass	Avg Purch Price	Avg Selling Price	Selling min	Selling max
A0	210	13.64	46.46	45.53	40.99	48.87
A1	972	15.35	54.77	55.50	23.24	58.14
A2	8351	19.17	54.89	56.61	52.39	59.00
A3	1838	21.51	55.38	57.14	50.12	59.00
A4	473	20.35	47.02	52.04	45.59	57.37
A5	108	20.45	42.41	46.15	45.37	57.37
A6	193	20.26	43.17	42.66	40.99	48.87
AB2	111	22.53	48.36	52.05	46.00	55.54
AB3	27	21.92	47.95	51.20	50.57	55.44
B2	158	25.21	43.00	44.54	38.39	55.54
B3	74	27.80	42.59	46.77	40.04	50.36
C2	809	15.12	42.55	45.01	39.00	46.95
C3	264	26.32	42.01	44.57	40.00	47.09
13 588						

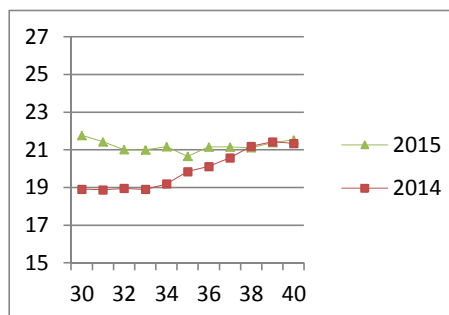
Lamb A2 - Sales Price



PIGS

Class	Units	Avg Mass	Avg Purch Price	Purch Min	Purch Max
BC	40	70.355	21.63	18.08	23.50
BO	2749	80.84	21.27	20.00	22.74
BP	3685	76.198	21.53	20.00	22.77
BR	293	85.455	20.34	19.50	22.14
BS	66	89.092	17.40	17.40	17.40
BU	1	88.2	19.50	19.50	19.50
PC	1	56	22.00	22.00	22.00
PO	29	53.548	22.14	21.49	23.50
PP	301	50.387	22.47	21.70	23.50
PR	6	47.117	22.82	22.00	23.00
SAS	131	133.36	15.61	14.50	17.50
7 302					
Hide	Feedlot	14.00			
	Veldt	14.00			
Dorper	ea	92.00			
Merino	ea	75.00			

Baconer BO - Purchase Price



THIS INFORMATION IS PROTECTED AGAINST COPYING OR DISTRIBUTION WITHOUT PRIOR PERMISSION FROM THE RMAA BOARD.

FOR ENQUIRIES, PLEASE CONTACT RMAA AT TEL (012) 349 1237/8 or priceinformation@rmaa.co.za

Disclaimer: In no event shall the RMAA be liable for any direct, special, indirect or consequential damages, or any other damages of any kind, including but not limited to loss of use, loss of profits, or loss of data, whether in an action in contract, tort (including but not limited to negligence), or otherwise, arising out of or in any way connected with the use of this information. While the RMAA takes great care in compiling the contents of this page, it is nevertheless only meant to provide non-binding general information and cannot replace detailed individual advice to help the prospective buyer make his decision. The RMAA does not guarantee that the information on these pages is up-to-date, accurate and complete.