

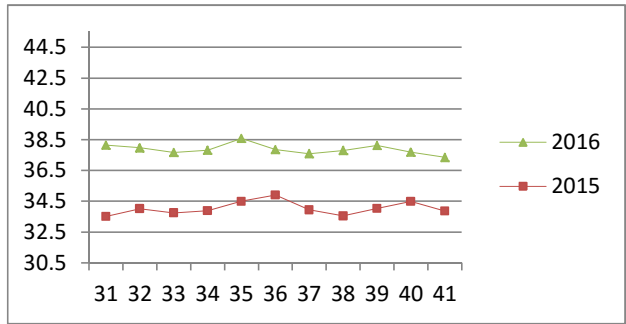
NATIONAL SOUTH AFRICAN PRICE INFORMATION FOR WEEK 41

Class Units Avg Mass Avg Purch Price Avg Selling Price Selling min Selling max From 2016/10/10 To 2016/10/16

CATTLE

Class	Units	Avg Mass	Avg Purch Price	Avg Selling Price	Selling min	Selling max
A2	11529	262.40	37.65	37.35	36.47	40.80
A3	1190	275.91	37.88	37.84	35.30	40.95
AB2	416	257.47	36.22	36.91	32.00	39.80
AB3	130	284.28	36.36	37.08	34.00	39.80
B2	312	252.91	33.22	34.18	27.80	41.22
B3	83	291.26	33.97	33.94	27.12	36.50
C2	1518	245.73	32.35	33.29	29.45	35.96
C3	493	276.35	32.59	33.50	29.57	35.50
	15,671					

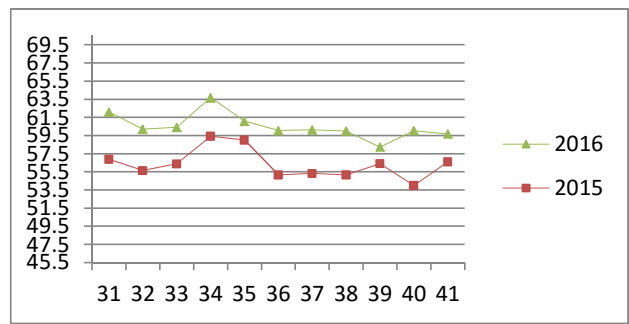
Beef A2 - Sales Price



LAMB/SHEEP

Class	Units	Avg Mass	Avg Purch Price	Avg Selling Price	Selling min	Selling max
A0	396	13.35	46.77	46.75	41.42	63.00
A1	1757	16.69	59.09	59.41	50.00	63.00
A2	14711	20.06	60.88	59.68	55.87	71.88
A3	3122	21.80	61.53	58.94	56.04	71.47
A4	767	22.30	52.05	50.04	46.20	67.00
A5	204	22.01	47.13	45.31	39.97	52.00
A6	266	20.71	47.11	46.48	40.17	50.00
AB2	290	21.36	52.04	51.12	43.06	62.50
AB3	75	24.49	50.07	49.54	35.38	61.00
B2	420	24.43	48.81	49.85	42.00	57.00
B3	128	28.07	47.44	48.20	44.02	50.95
C2	1173	24.80	46.23	46.69	39.51	55.22
C3	401	27.03	46.51	44.59	36.64	51.37
	23,710					

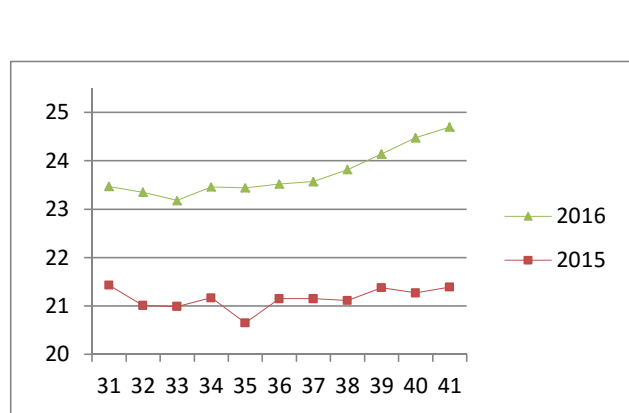
Lamb A2 - Sales Price



PIGS

Class	Units	Avg Mass	Avg Purch Price	Purch Min	Purch Max
BP	6769	74.21	24.58	22.30	27.00
BO	2723	75.64	24.70	22.30	26.50
BR	301	77.16	24.26	15.30	26.50
BC	36	76.44	21.45	15.00	26.50
BU	14	77.20	20.14	13.00	24.60
BS	5	76.98	23.13	19.00	25.00
PP	2027	52.01	25.72	20.44	45.00
PO	126	50.87	25.72	23.50	26.54
PR	24	48.89	24.35	20.00	26.00
PC	3	52.50	25.00	25.00	25.00
PS	7	40.51	24.04	20.00	24.04
SAB	182	128.04	14.73	8.00	19.00
HP	3819	84.98	23.89	22.30	25.22
HO	3855	85.90	23.95	22.30	25.07
HR	650	87.38	23.18	12.10	24.50
HC	46	86.33	20.03	11.40	23.50
HU	8	89.38	18.26	13.00	23.50
HS	11	94.39	10.73	9.40	14.64
CP	1423	61.13	24.98	22.40	27.00
CO	254	62.55	25.18	22.40	25.75
CR	22	62.92	24.40	15.30	25.50
CC	3	61.60	19.13	16.00	24.60
CU	2	63.50	21.50	21.50	21.50
CS	2	59.30	11.00	11.00	11.00
SAS	695	157.58	17.09	15.50	19.80
	23,007				

Baconer BO - Purchase Price



Hide	Feedlot	15.47
	Veldt	15.26
Dorper	ea	30.36
Merino	ea	77.50

THIS INFORMATION IS PROTECTED AGAINST COPYING OR DISTRIBUTION WITHOUT PRIOR PERMISSION FROM THE RMAA BOARD.

FOR ENQUIRIES, PLEASE CONTACT RMAA AT TEL (012) 349 1237/8 or priceinformation@rmaa.co.za

Disclaimer: In no event shall the RMAA be liable for any direct, special, indirect or consequential damages, or any other damages of any kind, including but not limited to loss of use, loss of profits, or loss of data, whether in an action in contract, tort (including but not limited to negligence), or otherwise, arising out of or in any way connected with the use of this information. While the RMAA takes great care in compiling the contents of this page, it is nevertheless only meant to provide non-binding general information and cannot replace detailed individual advice to help the prospective buyer make his decision. The RMAA does not guarantee that the information on these pages is up-to-date, accurate and complete.