

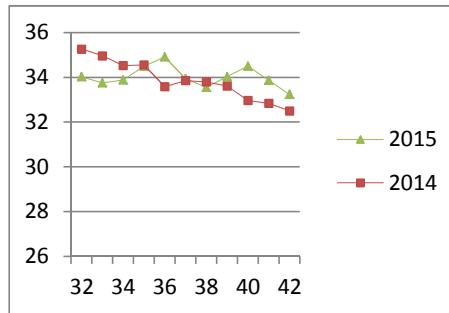
NATIONAL SOUTH AFRICAN PRICE INFORMATION FOR WEEK 42

Class Units Avg Mass Avg Purch Price Avg Selling Price Selling min Selling max From 2015/10/12 To 2015/10/18

CATTLE

Class	Units	Avg Mass	Avg Purch Price	Avg Selling Price	Selling min	Selling max
A2	8119	252.59	34.41	33.24	29.71	36.10
A3	758	239.45	35.12	33.35	31.50	36.10
AB2	489	266.61	33.35	32.75	30.00	36.10
AB3	43	280.88	32.83	32.50	30.00	36.10
B2	365	256.73	30.36	30.28	27.69	32.95
B3	33	300.93	30.91	30.58	28.14	32.95
C2	1059	260.67	28.42	28.72	25.14	30.08
C3	196	293.50	27.03	25.74	26.49	30.50
11 062						

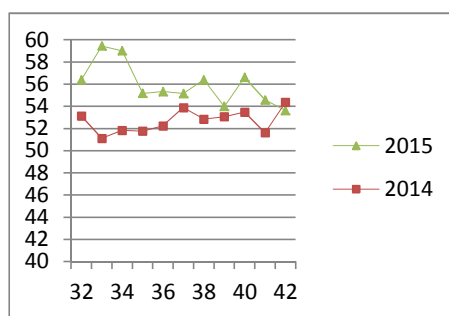
Beef A2 - Sales Price



LAMB/SHEEP

A0	456	12.59	43.48	42.39	32.49	47.64
A1	1189	15.04	52.33	51.16	43.78	58.88
A2	9264	19.03	47.99	53.63	49.92	58.88
A3	1812	21.47	48.28	53.98	49.82	58.88
A4	340	21.12	39.57	47.15	46.00	50.44
A5	75	20.86	40.73	41.88	39.34	47.77
A6	107	22.23	40.49	41.93	32.49	47.64
AB2	286	18.81	46.41	45.40	34.17	52.00
AB3	64	24.13	47.77	44.03	34.67	52.00
B2	126	23.62	44.16	43.89	36.73	46.70
B3	39	26.92	43.36	40.57	31.90	46.00
C2	1135	21.52	42.64	41.61	35.67	45.80
C3	260	27.11	42.38	40.09	35.67	48.06
15 153						

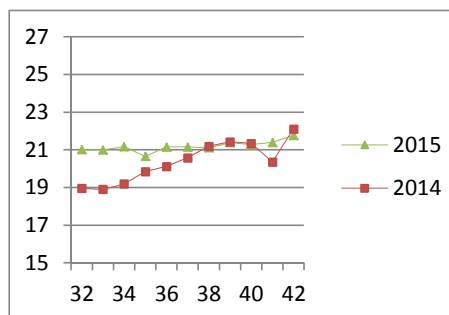
Lamb A2 - Sales Price



PIGS

Class	Units	Avg Mass	Avg Purch Price	Purch Min	Purch Max
BC	34	69.681	21.32	18.30	25.00
BO	2390	80.473	21.77	21.00	23.45
BP	3905	75.609	21.82	21.00	24.00
BR	255	84.892	20.40	20.17	23.29
BS	12	89.97	15.50	15.50	15.50
BU	3	54.77	18.40	18.40	18.40
PC	3	46.95	20.49	19.20	21.00
PO	28	55.253	22.79	22.78	23.00
PP	198	56.3	22.56	21.00	23.50
PR	2	45.95	21.51	21.00	22.00
SAS	224	140.73	16.21	13.50	18.00
7 054					
Hide	Feedlot	13.59			
	Veldt	13.59			
Dorper	ea	90.00			
Merino	ea	79.17			

Baconer BO - Purchase Price



THIS INFORMATION IS PROTECTED AGAINST COPYING OR DISTRIBUTION WITHOUT PRIOR PERMISSION FROM THE RMAA BOARD.

FOR ENQUIRIES, PLEASE CONTACT RMAA AT TEL (012) 349 1237/8 or priceinformation@rmaa.co.za

Disclaimer: In no event shall the RMAA be liable for any direct, special, indirect or consequential damages, or any other damages of any kind, including but not limited to loss of use, loss of profits, or loss of data, whether in an action in contract, tort (including but not limited to negligence), or otherwise, arising out of or in any way connected with the use of this information. While the RMAA takes great care in compiling the contents of this page, it is nevertheless only meant to provide non-binding general information and cannot replace detailed individual advice to help the prospective buyer make his decision. The RMAA does not guarantee that the information on these pages is up-to-date, accurate and complete.