

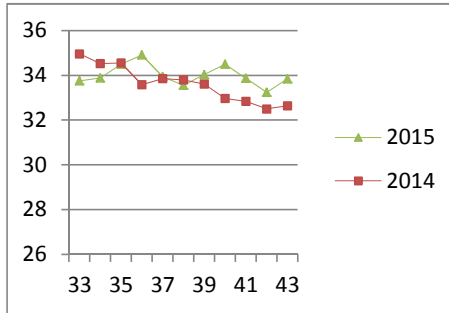
NATIONAL SOUTH AFRICAN PRICE INFORMATION FOR WEEK 43

Class Units Avg Mass Avg Purch Price Avg Selling Price Selling min Selling max From 2015/10/19 To 2015/10/25

CATTLE

Class	Units	Avg Mass	Avg Purch Price	Avg Selling Price	Selling min	Selling max
A2	9197	258.98	34.82	33.84	29.18	38.90
A3	1195	280.48	34.91	34.45	27.86	38.90
AB2	510	267.93	33.33	32.68	29.50	37.90
AB3	97	296.66	33.28	32.85	30.91	37.90
B2	344	255.58	30.90	30.86	28.27	32.95
B3	68	293.32	30.32	30.64	28.32	32.80
C2	1090	251.38	29.02	28.84	25.50	31.90
C3	233	298.35	29.87	29.40	25.11	31.90
12 734						

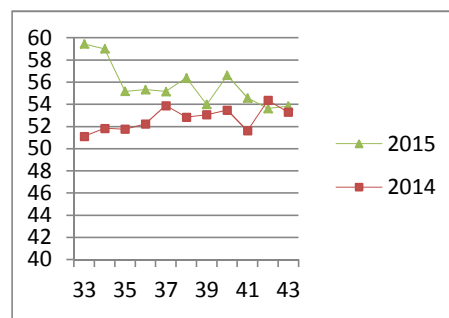
Beef A2 - Sales Price



LAMB/SHEEP

Class	Units	Avg Mass	Avg Purch Price	Avg Selling Price	Selling min	Selling max
A0	299	10.99	41.16	41.21	38.00	55.00
A1	747	13.76	52.55	51.70	45.41	57.00
A2	11114	17.94	54.04	53.84	43.33	60.85
A3	3169	21.22	54.27	53.82	30.45	60.85
A4	437	21.55	47.00	48.33	46.00	60.85
A5	213	21.02	40.24	38.86	37.38	49.00
A6	118	20.43	40.84	40.31	32.40	48.51
AB2	290	18.68	46.52	46.58	37.90	51.00
AB3	77	21.02	46.11	45.93	42.36	51.95
B2	326	22.09	43.58	44.01	40.85	46.50
B3	68	25.60	40.41	41.27	26.94	46.50
C2	1146	22.77	41.00	40.45	37.90	46.00
C3	344	24.64	40.66	40.36	38.95	46.00
18 348						

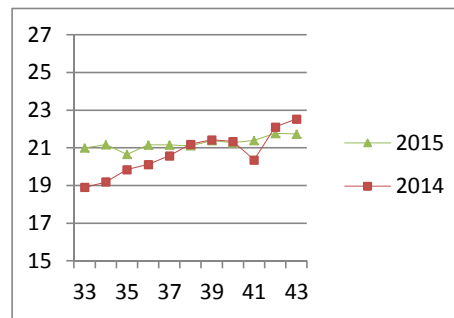
Lamb A2 - Sales Price



PIGS

Class	Units	Avg Mass	Avg Purch Price	Purch Min	Purch Max
BC	17	78.382	20.09	18.25	25.00
BO	2762	80.159	21.73	21.00	23.61
BP	4166	75.178	21.45	21.00	24.00
BR	291	83.825	20.30	20.17	21.54
BS	1	63.50	18.00	18.00	18.00
BU	5	84.94	18.40	18.40	18.40
PC	3	46.367	20.59	19.80	21.00
PO	46	51.46	22.85	22.00	24.00
PP	197	47.48	23.23	22.10	25.00
PR	1	35.90	21.00	21.00	21.00
SAS	238	159.85	16.76	12.60	19.27
7 727					
Hide	Feedlot	13.03			
	Veldt	13.16			
Dorper	ea	72.50			
Merino	ea	80.00			

Baconer BO - Purchase Price



THIS INFORMATION IS PROTECTED AGAINST COPYING OR DISTRIBUTION WITHOUT PRIOR PERMISSION FROM THE RMAA BOARD.

FOR ENQUIRIES, PLEASE CONTACT RMAA AT TEL (012) 349 1237/8 or priceinformation@rmaa.co.za

Disclaimer: In no event shall the RMAA be liable for any direct, special, indirect or consequential damages, or any other damages of any kind, including but not limited to loss of use, loss of profits, or loss of data, whether in an action in contract, tort (including but not limited to negligence), or otherwise, arising out of or in any way connected with the use of this information. While the RMAA takes great care in compiling the contents of this page, it is nevertheless only meant to provide non-binding general information and cannot replace detailed individual advice to help the prospective buyer make his decision. The RMAA does not guarantee that the information on these pages is up-to-date, accurate and complete.