

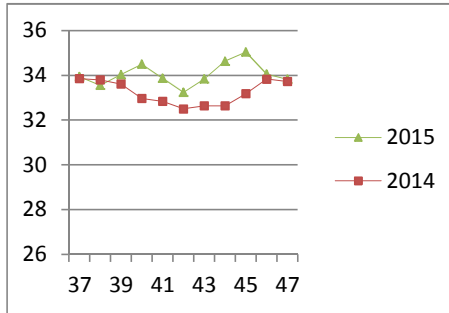
NATIONAL SOUTH AFRICAN PRICE INFORMATION FOR WEEK 47

Class Units Avg Mass Avg Purch Price Avg Selling Price Selling min Selling max From 2015/11/16 To 2015/11/22

CATTLE

Class	Units	Avg Mass	Avg Purch Price	Avg Selling Price	Selling min	Selling max
A2	10802	254.44	34.96	33.82	30.80	37.50
A3	1346	270.55	35.16	34.19	31.80	37.50
AB2	522	257.12	33.19	32.56	28.67	37.76
AB3	81	295.09	32.97	32.86	30.02	37.76
B2	449	245.35	30.52	30.67	26.43	36.00
B3	46	280.73	30.07	29.55	27.74	32.50
C2	1664	252.16	28.39	28.52	24.85	33.50
C3	313	290.11	28.82	29.12	25.91	33.50
15 223						

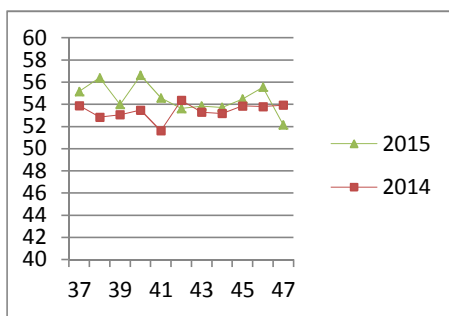
Beef A2 - Sales Price



LAMB/SHEEP

A0	258	12.03	40.30	41.26	24.22	50.00
A1	1028	13.96	54.81	51.69	42.50	58.50
A2	10368	19.78	55.16	52.13	49.64	59.84
A3	2025	22.34	55.26	54.37	47.72	59.84
A4	345	22.83	49.21	47.36	46.00	59.84
A5	83	22.37	44.11	40.22	18.38	59.84
A6	132	20.37	42.94	40.54	36.00	45.85
AB2	262	17.97	47.26	45.23	24.22	52.00
AB3	45	20.41	46.47	43.65	36.94	52.00
B2	81	22.60	44.00	43.85	42.18	47.00
B3	38	26.84	43.12	42.46	41.93	46.00
C2	1322	22.95	40.39	39.16	36.18	45.00
C3	290	25.82	40.36	40.56	36.58	45.53
16 277						

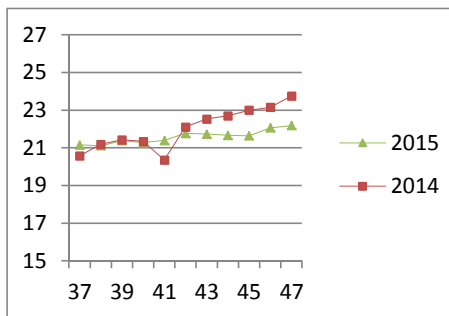
Lamb A2 - Sales Price



PIGS

Class	Units	Avg Mass	Avg Purch Price	Purch Min	Purch Max
BC	16	81.31	19.16	16.00	23.13
BO	2821	80.447	22.18	21.50	24.00
BP	5380	76.48	22.31	21.50	24.50
BR	342	83.855	21.09	20.65	23.13
BS	11	68.45	18.62	13.13	21.25
BU	5	75.298	20.48	19.00	23.13
PC	2	47.3	23.14	22.50	23.63
PO	37	50.08	23.82	22.11	26.00
PP	581	51.43	24.19	21.50	26.00
PR	5	48.91	23.37	22.25	23.63
SAS	255	144.18	16.22	12.50	22.00
9 455					
Hide	Feedlot	12.56			
	Veldt	12.40			
Dorper	ea	79.44			
Merino	ea	72.40			

Baconer BO - Purchase Price



THIS INFORMATION IS PROTECTED AGAINST COPYING OR DISTRIBUTION WITHOUT PRIOR PERMISSION FROM THE RMAA BOARD.

FOR ENQUIRIES, PLEASE CONTACT RMAA AT TEL (012) 349 1237/8 or priceinformation@rmaa.co.za

Disclaimer: In no event shall the RMAA be liable for any direct, special, indirect or consequential damages, or any other damages of any kind, including but not limited to loss of use, loss of profits, or loss of data, whether in an action in contract, tort (including but not limited to negligence), or otherwise, arising out of or in any way connected with the use of this information. While the RMAA takes great care in compiling the contents of this page, it is nevertheless only meant to provide non-binding general information and cannot replace detailed individual advice to help the prospective buyer make his decision. The RMAA does not guarantee that the information on these pages is up-to-date, accurate and complete.