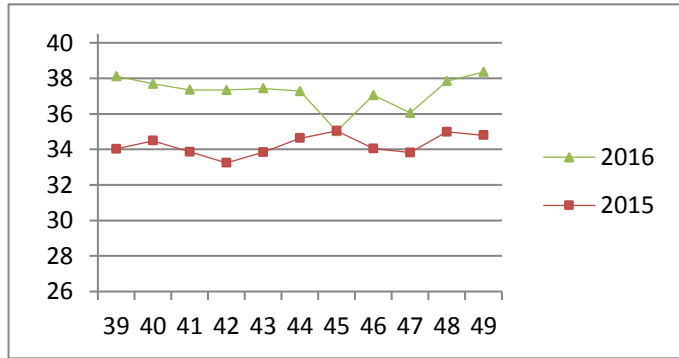


NATIONAL SOUTH AFRICAN PRICE INFORMATION FOR WEEK 49

From 2016/12/05 To 2016/12/11

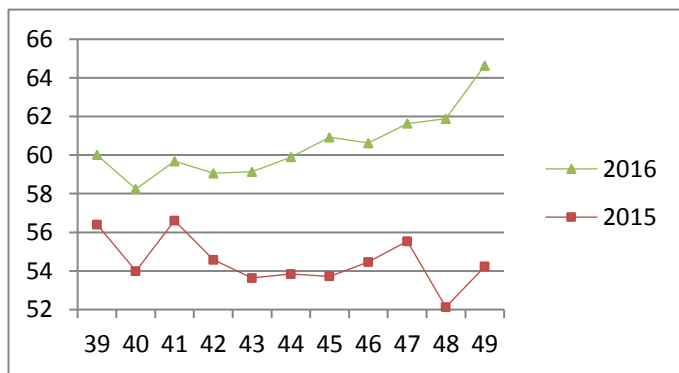
Class	Units	Avg Mass	Avg Purch Price	Avg Selling Price	Selling min	Selling max
CATTLE						
A2	19017	262.04	38.52	38.36	35.99	43.20
A3	2555	279.12	38.55	38.31	36.50	42.15
AB2	724	253.76	37.42	37.85	34.00	42.12
AB3	182	282.43	37.53	37.66	31.00	40.70
B2	408	240.93	34.26	35.83	32.00	41.04
B3	57	279.34	34.66	35.29	32.50	39.00
C2	1622	251.64	33.64	34.90	26.92	39.96
C3	347	281.14	33.58	35.16	32.00	38.50
24 912						

Beef A2 - Sales Price



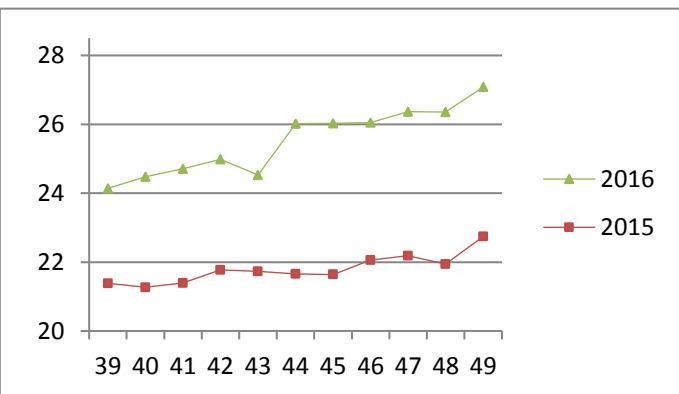
Class	Units	Avg Mass	Avg Purch Price	Avg Selling Price	Selling min	Selling max
LAMB/SHEEP						
A0	699	14.20	52.53	53.17	46.00	57.00
A1	3067	16.46	60.06	64.33	58.97	69.00
A2	17083	19.83	62.70	64.64	61.00	68.60
A3	3130	22.36	61.99	63.97	61.81	67.31
A4	662	23.49	53.97	56.83	52.69	60.63
A5	106	22.57	49.01	49.76	43.10	58.10
A6	124	22.94	51.34	50.24	44.58	55.55
AB2	293	21.61	53.13	57.99	51.96	66.92
AB3	41	24.56	52.14	52.41	37.68	60.68
B2	1101	23.71	52.39	52.86	47.90	60.48
B3	140	26.14	52.34	52.95	42.62	57.06
C2	1230	25.15	48.42	50.28	47.43	55.02
C3	382	27.48	48.17	49.49	47.45	53.00
28 058						

Lamb A2 - Sales Price



Hide	Feedlot	15.74
	Veldt	15.80
Dorper	ea	43.55
Merino	ea	82.08

Baconer BO - Purchase Price



Class	Units	Avg Mass	Avg Purch Price	Purch Min	Purch Max
PIGS					
BP	9074	72.459	26.65	22.30	30.56
BO	3988	74.0089	27.08	22.30	30.43
BR	378	75.3247	26.44	24.76	30.00
BC	53	71.9798	23.08	19.48	27.00
BU	10	76.7	21.70	21.50	22.50
BS	10	79.16	18.89	11.00	22.00
PP	3420	51.06	27.33	22.50	32.45
PO	221	50.39	27.37	24.49	32.50
PR	41	47.15	25.79	21.00	28.00
PC	9	49.2889	24.32	16.00	30.00
PS	2	50.75	17.81	11.00	11.00
SAS	61	136.56	13.16	6.00	23.00
HP	4067	83.98	25.98	22.30	29.62
HO	3334	85.48	25.89	22.30	29.47
HR	629	86.37	24.90	22.60	28.50
HC	61	86.52	20.74	14.46	25.00
HU	10	83.27	20.20	16.90	25.00
HS	23	85.20	15.66	11.00	19.00
CP	3287	61.42	27.36	22.40	31.25
CO	804	62.47	26.91	22.40	31.00
CR	39	62.7	26.49	23.00	27.00
CC	8	62.4	27.00	27.00	27.00
CU	2	61.9	27.00	27.00	27.00
CS	2	63.4	27.00	27.00	27.00
SAS	579	150.15	17.65	14.00	23.00
30 112					

THIS INFORMATION IS PROTECTED AGAINST COPYING OR DISTRIBUTION WITHOUT PRIOR PERMISSION FROM THE RMAA BOARD.

FOR ENQUIRIES, PLEASE CONTACT RMAA AT TEL (012) 349 1237/8 or priceinformation@rmaa.co.za

Disclaimer: In no event shall the RMAA be liable for any direct, special, indirect or consequential damages, or any other damages of any kind, including but not limited to loss of use, loss of profits, or loss of data, whether in an action in contract, tort (including but not limited to negligence), or otherwise, arising out of or in any way connected with the use of this information. While the RMAA takes great care in compiling the contents of this page, it is nevertheless only meant to provide non-binding general information and cannot replace detailed individual advice to help the prospective buyer make his decision. The RMAA does not guarantee that the information on these pages is up-to-date, accurate and complete.