

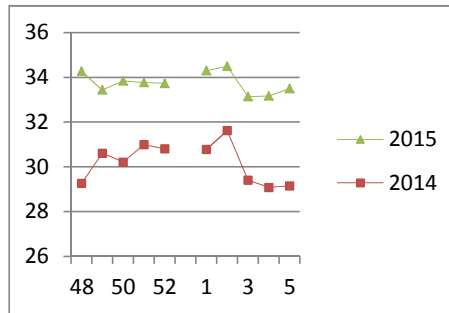
NATIONAL SOUTH AFRICAN PRICE INFORMATION FOR WEEK 5

Class Units Avg Mass Avg Purch Price Avg Selling Price Selling min Selling max From 2015/01/26 To 2015/02/01

CATTLE

Class	Units	Avg Mass	Avg Purch Price	Avg Selling Price	Selling min	Selling max
A2	2996	269.57	33.32	33.49	30.00	36.85
A3	820	256.70	33.97	33.98	31.75	36.85
AB2	130	261.78	30.90	31.28	26.57	36.85
AB3	12	294.98	31.27	32.43	27.65	36.85
B2	129	245.86	26.53	29.98	25.95	36.85
B3	55	298.02	28.52	29.17	25.50	36.85
C2	317	244.55	27.22	26.32	25.00	27.26
C3	39	295.30	27.30	26.98	25.00	27.19
4 498						

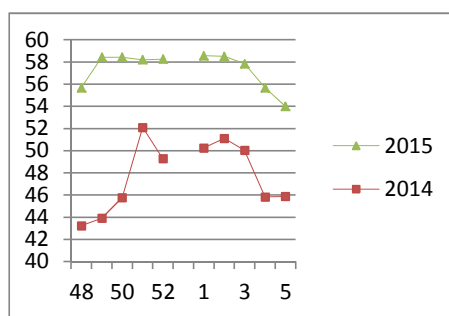
Beef A2 - Sales Price



LAMB/SHEEP

Class	Units	Avg Mass	Avg Purch Price	Avg Selling Price	Selling min	Selling max
A0	143	13.96	45.71	43.35	33.87	43.66
A1	456	14.87	51.13	52.71	46.00	63.80
A2	4676	18.51	53.31	54.00	50.00	63.80
A3	809	22.51	56.19	57.80	50.00	63.80
A4	69	22.40	47.04	58.30	48.98	63.80
A5	3	26.24	41.00	63.80	63.80	63.80
A6	3	30.20	41.00	42.45	33.87	43.66
AB2	202	19.82	42.82	44.05	40.55	61.80
AB3	14	23.27	42.95	43.22	40.55	48.97
B2	112	23.87	39.23	41.57	35.20	61.80
B3	19	26.03	39.00	39.21	38.00	40.00
C2	376	23.68	37.17	41.20	30.54	41.52
C3	42	25.17	34.04	38.27	27.00	40.28
6 924						

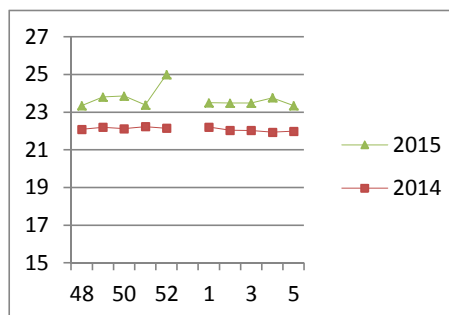
Lamb A2 - Sales Price



PIGS

Class	Units	Avg Mass	Avg Purch Price	Purch Min	Purch Max
BC	22	84.076	21.08	20.00	22.50
BO	1906	81.006	23.35	23.00	26.89
BP	3443	77.435	24.07	23.15	27.00
BR	470	82.465	22.14	21.90	26.29
BS	2	90	17.70	17.70	17.70
BU	9	73.133	21.13	20.60	21.50
PC	1	44.9	25.50	25.50	25.50
PO	13	50.828	27.00	27.00	27.00
PP	498	51.598	26.38	25.50	26.50
PR	4	46.9	23.50	23.50	23.50
SAS	96	163.41	17.77	15.68	19.00
6 464					
Hide	Feedlot	18.17			
	Veldt	18.17			
Dorper	ea	93.00			
Merino	ea	59.00			

Baconer BO - Purchase Price



THIS INFORMATION IS PROTECTED AGAINST COPYING OR DISTRIBUTION WITHOUT PRIOR PERMISSION FROM THE RMAA BOARD.

FOR ENQUIRIES, PLEASE CONTACT RMAA AT TEL (012) 349 1237/8 or priceinformation@rmaa.co.za

Disclaimer: In no event shall the RMAA be liable for any direct, special, indirect or consequential damages, or any other damages of any kind, including but not limited to loss of use, loss of profits, or loss of data, whether in an action in contract, tort (including but not limited to negligence), or otherwise, arising out of or in any way connected with the use of this information. While the RMAA takes great care in compiling the contents of this page, it is nevertheless only meant to provide non-binding general information and cannot replace detailed individual advice to help the prospective buyer make his decision. The RMAA does not guarantee that the information on these pages is up-to-date, accurate and complete.