

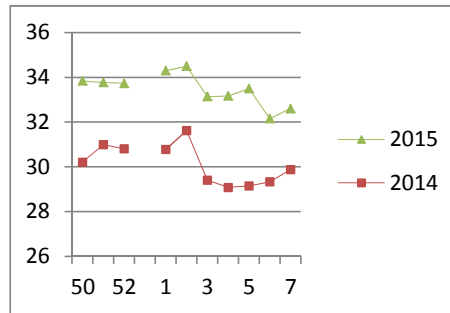
NATIONAL SOUTH AFRICAN PRICE INFORMATION FOR WEEK 7

Class Units Avg Mass Avg Purch Price Avg Selling Price Selling min Selling max From 2015/02/09 To 2015/02/15

CATTLE

Class	Units	Avg Mass	Avg Purch Price	Avg Selling Price	Selling min	Selling max
A2	4860	254.73	33.17	32.60	28.00	37.40
A3	848	255.25	33.95	33.45	30.06	37.40
AB2	171	223.83	31.08	30.04	24.00	37.40
AB3	21	277.33	30.82	29.99	28.00	37.40
B2	245	227.67	28.74	28.37	24.00	37.40
B3	71	285.41	28.84	29.01	24.00	37.40
C2	582	245.88	27.35	27.64	24.00	31.35
C3	87	280.94	27.34	28.42	24.00	31.35
6 885						

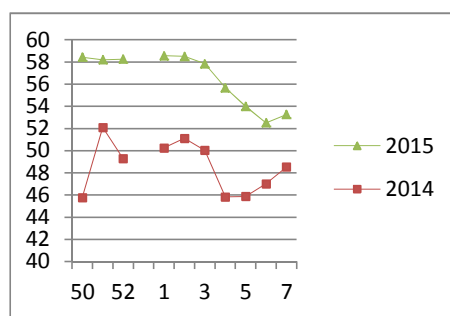
Beef A2 - Sales Price



LAMB/SHEEP

A0	148	13.42	43.89	41.68	30.00	44.00
A1	457	15.09	52.79	51.03	45.38	52.13
A2	4322	19.67	52.93	53.26	48.00	63.25
A3	854	23.34	55.62	56.59	48.00	63.25
A4	36	21.57	49.92	51.55	47.00	63.25
A5	18	20.20	50.52	48.00	48.00	48.00
A6	8	17.94	44.24	42.08	30.00	43.13
AB2	80	22.93	46.48	49.95	38.00	61.25
AB3	19	25.62	46.01	54.83	43.06	61.25
B2	108	25.21	38.55	43.21	34.80	61.25
B3	12	27.08	40.51	38.02	35.98	41.77
C2	297	23.58	38.19	39.75	36.17	41.58
C3	75	26.25	39.18	39.48	36.17	41.35
6 434						

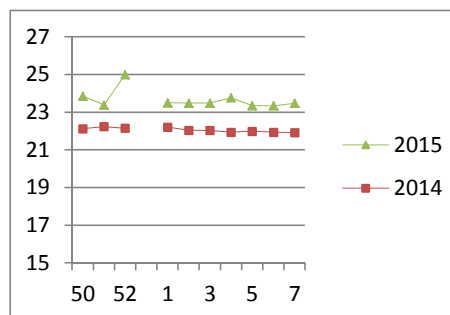
Lamb A2 - Sales Price



PIGS

Class	Units	Avg Mass	Avg Purch Price	Purch Min	Purch Max
BC	16	73.418	20.78	20.00	21.90
BO	1435	80.008	23.47	23.01	24.60
BP	3833	73.964	23.56	20.81	27.00
BR	184	81.785	22.45	22.40	25.50
BS	17	88.576	17.75	17.70	18.00
BU	2	76.6	19.67	19.00	20.60
PC	4	44.5	20.00	20.00	20.00
PO	21	53.462	25.36	24.26	27.00
PP	589	50.828	25.12	22.85	27.00
PR	2	51.1	23.00	23.00	23.00
SAS	70	159.49	17.51	15.69	18.00
6 173					
Hide	Feedlot	18.15			
	Veldt	18.15			
Dorper	ea	96.25			
Merino	ea	70.00			

Baconer BO - Purchase Price



THIS INFORMATION IS PROTECTED AGAINST COPYING OR DISTRIBUTION WITHOUT PRIOR PERMISSION FROM THE RMAA BOARD.

FOR ENQUIRIES, PLEASE CONTACT RMAA AT TEL (012) 349 1237/8 or priceinformation@rmaa.co.za

Disclaimer: In no event shall the RMAA be liable for any direct, special, indirect or consequential damages, or any other damages of any kind, including but not limited to loss of use, loss of profits, or loss of data, whether in an action in contract, tort (including but not limited to negligence), or otherwise, arising out of or in any way connected with the use of this information. While the RMAA takes great care in compiling the contents of this page, it is nevertheless only meant to provide non-binding general information and cannot replace detailed individual advice to help the prospective buyer make his decision. The RMAA does not guarantee that the information on these pages is up-to-date, accurate and complete.