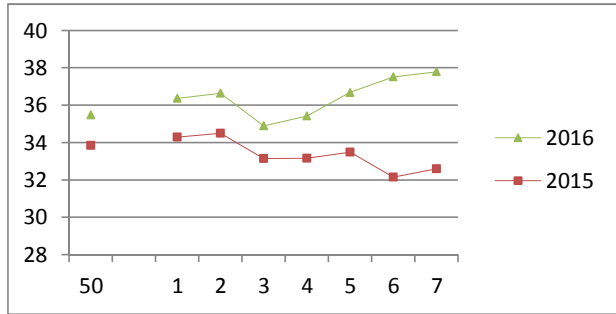


# NATIONAL SOUTH AFRICAN PRICE INFORMATION FOR WEEK 7

From 2016/02/15 To 2016/02/21

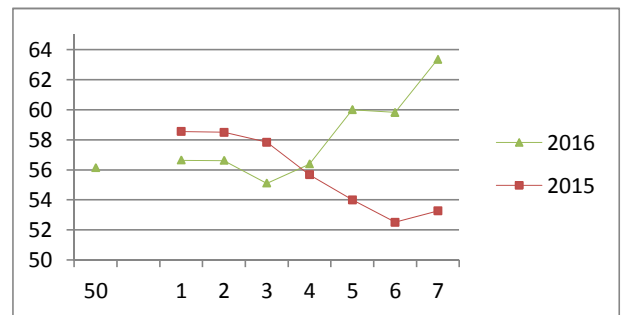
Class	Units	Avg Mass	Avg Purch Price	Avg Selling Price	Selling min	Selling max
<b>CATTLE</b>						
A2	8613	258.69	<b>37.92</b>	<b>37.78</b>	27.50	39.90
A3	1428	279.99	<b>37.72</b>	<b>37.89</b>	36.00	39.90
AB2	595	264.12	<b>35.96</b>	<b>36.36</b>	32.50	38.00
AB3	94	286.77	<b>36.20</b>	<b>36.49</b>	32.50	38.42
B2	487	242.95	<b>33.24</b>	<b>33.37</b>	25.50	36.00
B3	43	264.20	<b>33.15</b>	<b>32.79</b>	25.50	35.92
C2	1812	244.30	<b>32.19</b>	<b>31.76</b>	29.71	34.59
C3	328	279.07	<b>32.63</b>	<b>31.93</b>	29.58	34.59
	13 400					

**Beef A2 - Sales Price**



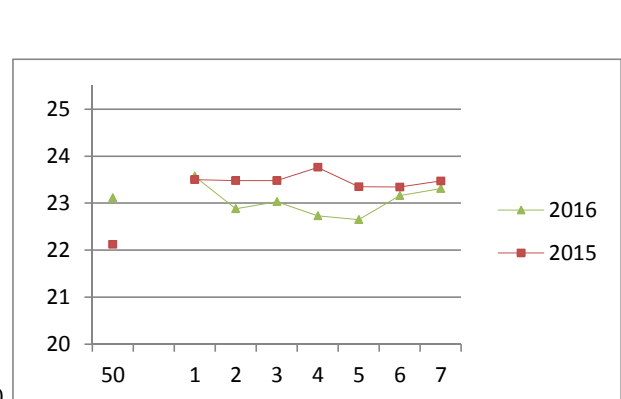
Class	Units	Avg Mass	Avg Purch Price	Avg Selling Price	Selling min	Selling max
<b>LAMB/SHEEP</b>						
A0	284	13.72	<b>48.28</b>	<b>52.07</b>	21.00	56.39
A1	1293	14.54	<b>63.67</b>	<b>63.74</b>	42.00	69.00
A2	10530	18.93	<b>62.92</b>	<b>63.36</b>	54.67	75.44
A3	1972	20.81	<b>61.97</b>	<b>63.41</b>	54.75	76.36
A4	343	20.58	<b>51.49</b>	<b>53.79</b>	47.35	77.00
A5	83	20.22	<b>46.72</b>	<b>47.87</b>	39.30	69.70
A6	203	18.14	<b>47.27</b>	<b>48.10</b>	39.42	69.70
AB2	268	19.97	<b>55.70</b>	<b>57.36</b>	46.28	70.32
AB3	47	22.58	<b>53.98</b>	<b>54.15</b>	45.69	69.70
B2	342	21.34	<b>52.21</b>	<b>52.94</b>	42.00	60.00
B3	50	24.32	<b>47.28</b>	<b>49.54</b>	42.90	52.00
C2	1199	22.79	<b>46.08</b>	<b>47.66</b>	38.91	54.00
C3	308	24.93	<b>45.69</b>	<b>46.71</b>	38.91	51.43
	16 922					

**Lamb A2 - Sales Price**



Class	Units	Avg Mass	Avg Purch Price	Purch Min	Purch Max
<b>PIGS</b>					
BP	7495	73.0158	<b>23.19</b>	22.00	26.00
BO	3962	74.203	<b>23.31</b>	21.99	24.00
BR	499	75.0803	<b>22.61</b>	15.20	23.50
BC	57	74.1375	<b>19.48</b>	13.30	22.74
BU	8	75.1475	<b>17.03</b>	13.00	21.00
BS	6	77.74	<b>18.32</b>	13.00	23.50
PP	1030	50.36	<b>23.37</b>	21.91	25.00
PO	167	52.15	<b>23.35</b>	21.48	25.00
PR	30	48.60	<b>22.07</b>	21.10	24.12
PC	6	45.5333	<b>19.62</b>	13.00	21.00
SAU	92	131.41	<b>13.11</b>	8.00	17.00
HP	2817	86.24	<b>23.30</b>	22.00	24.00
HO	3348	87.6299	<b>23.35</b>	22.00	23.74
HR	742	89.03	<b>22.89</b>	21.50	23.50
HC	1074	89.85	<b>18.07</b>	18.00	20.00
HU	15	90.71	<b>17.33</b>	16.00	17.53
HS	5	60.48	<b>13.88</b>	9.40	14.20
CP	579	60.12	<b>23.41</b>	10.00	26.00
CO	108	61.23	<b>23.57</b>	23.38	24.00
CR	18	55.43	<b>22.03</b>	10.00	23.58
CC	7	58.01	<b>18.98</b>	14.00	20.73
CU	2	55	<b>13.00</b>	13.00	13.00
CS	2	41.25	<b>17.71</b>	10.00	20.00
SAS	370	146.323	<b>15.93</b>	14.13	17.00

**Baconer BO - Purchase Price**



Hide	Feedlot	<b>13.55</b>
	Veldt	<b>13.42</b>
Dorper	ea	<b>68.93</b>
Merino	ea	<b>94.00</b>

22 439

**THIS INFORMATION IS PROTECTED AGAINST COPYING OR DISTRIBUTION WITHOUT PRIOR PERMISSION FROM THE RMAA BOARD.**

**FOR ENQUIRIES, PLEASE CONTACT RMAA AT TEL (012) 349 1237/8 or [priceinformation@rmaa.co.za](mailto:priceinformation@rmaa.co.za)**

Disclaimer: In no event shall the RMAA be liable for any direct, special, indirect or consequential damages, or any other damages of any kind, including but not limited to loss of use, loss of profits, or loss of data, whether in an action in contract, tort (including but not limited to negligence), or otherwise, arising out of or in any way connected with the use of this information. While the RMAA takes great care in compiling the contents of this page, it is nevertheless only meant to provide non-binding general information and cannot replace detailed individual advice to help the prospective buyer make his decision. The RMAA does not guarantee that the information on these pages is up-to-date, accurate and complete.