

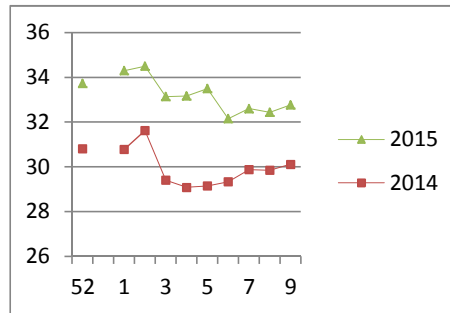
NATIONAL SOUTH AFRICAN PRICE INFORMATION FOR WEEK 9

Class Units Avg Mass Avg Purch Price Avg Selling Price Selling min Selling max From 2015/02/23 To 2015/03/01

CATTLE

Class	Units	Avg Mass	Avg Purch Price	Avg Selling Price	Selling min	Selling max
A2	4924	263.65	33.54	32.76	25.00	37.40
A3	773	268.78	33.99	33.47	30.03	37.40
AB2	270	236.99	30.07	29.89	25.00	37.40
AB3	55	286.76	31.12	29.75	25.00	37.40
B2	333	238.10	28.65	28.52	25.00	37.40
B3	34	267.95	27.54	27.64	25.00	37.40
C2	835	244.79	24.83	25.48	25.00	31.35
C3	177	278.26	25.34	26.08	21.70	31.35
	7 401					

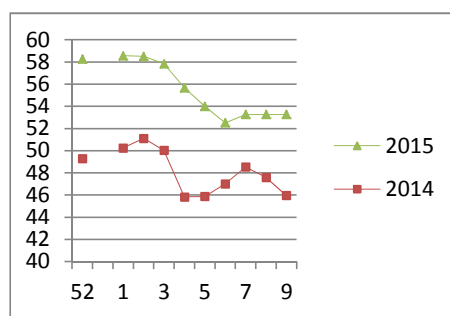
Beef A2 - Sales Price



LAMB/SHEEP

Class	Units	Avg Mass	Avg Purch Price	Avg Selling Price	Selling min	Selling max
A0	230	12.75	42.87	39.80	30.28	44.28
A1	438	15.60	52.18	52.33	47.69	52.95
A2	2748	18.92	52.91	53.27	50.38	63.25
A3	472	19.82	54.12	54.78	47.00	63.25
A4	128	19.11	53.29	54.67	47.00	63.25
A5	4	20.22	43.97	45.62	42.00	46.87
A6	2	19.40	42.25	44.28	30.28	44.28
AB2	142	18.62	44.23	45.57	43.84	61.25
AB3	8	26.12	44.19	46.48	43.30	61.25
B2	26	26.25	35.92	39.54	36.83	61.25
B3	7	28.22	38.23	40.00	36.61	61.25
C2	1090	21.84	43.78	42.10	37.94	45.00
C3	164	23.89	44.84	42.55	37.97	45.00
	5 459					

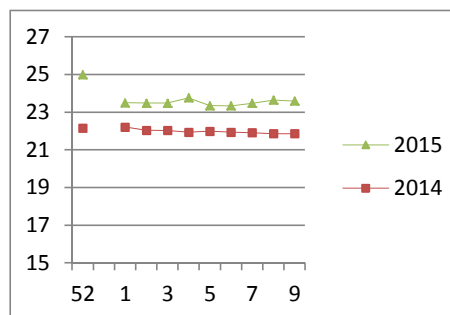
Lamb A2 - Sales Price



PIGS

Class	Units	Avg Mass	Avg Purch Price	Purch Min	Purch Max
BC	13	83.84	20.86	20.00	22.00
BO	2172	78.799	23.59	23.20	25.31
BP	4453	71.882	23.88	23.20	26.00
BR	306	83.491	22.44	22.10	24.50
BS	93	89.33	16.75	15.50	17.70
BU	1	71.9	19.00	19.00	19.00
PC	1	44.5	21.50	21.50	21.50
PO	32	51.481	24.38	23.03	26.50
PP	904	50.88	25.00	24.11	26.50
PR	14	46.7	22.50	22.50	22.50
SAS	63	166.14	15.79	15.49	17.70
	8 052				
Hide	Feedlot	18.32			
	Veldt	18.32			
Dorper	ea	95.00			
Merino	ea	61.67			

Baconer BO - Purchase Price



THIS INFORMATION IS PROTECTED AGAINST COPYING OR DISTRIBUTION WITHOUT PRIOR PERMISSION FROM THE RMAA BOARD.

FOR ENQUIRIES, PLEASE CONTACT RMAA AT TEL (012) 349 1237/8 or priceinformation@rmaa.co.za

Disclaimer: In no event shall the RMAA be liable for any direct, special, indirect or consequential damages, or any other damages of any kind, including but not limited to loss of use, loss of profits, or loss of data, whether in an action in contract, tort (including but not limited to negligence), or otherwise, arising out of or in any way connected with the use of this information. While the RMAA takes great care in compiling the contents of this page, it is nevertheless only meant to provide non-binding general information and cannot replace detailed individual advice to help the prospective buyer make his decision. The RMAA does not guarantee that the information on these pages is up-to-date, accurate and complete.