

RMAA ASSOCIATED MEMBERSHIP PACKAGE

T: (012) 349-1238/9

F: (012) 349-1240

www.rmaa.co.za

1. RMAA BACKGROUND

The RMAA (Red Meat Abattoir Association) is a representative forum for abattoir owners in South Africa. The abattoir industry is responsible for the conversion of livestock to meat. This process remains critical to ensure a safe and wholesome product to consumers. The Meat Safety Act, 2000 (Act no. 40 of 2000) addresses measures to promote the safety of meat and animal products and to establish and maintain Essential National Standards in respect of abattoirs.

The RMAA is an independent membership-based organisation, which was established in February 1991. Prior to the deregulation process, the abattoir industry comprised mainly of larger abattoirs with high throughput. The deregulation process resulted in an increase in the number of high and low throughput abattoirs.

2. MISSION

We serve abattoir owners by:

- providing specialised training and technical support,
- distributing relevant information and
- representing owner's interest

to secure standards of meat safety and quality to the benefit of the red meat industry and the consumer.

3. STRATEGIC OBJECTIVES

- Promote meat safety and Essential National Standards as provided for in the Meat Safety Act, 2000 (Act no. 40 of 2000).
- Provide applicable training to ensure the highest standards of animal handling and meat safety and quality.
- Contribute to the development and implementation of hygiene management programs in abattoirs.
- Participate actively in the establishment of the skills development framework in the meat industry.
- Represent the interests of members on forums relating to the abattoir industry.
- Assist in the enhancement of meat hygiene awareness in rural communities.
- Create an environment conducive to the continuing education of abattoir personnel.
- Liaise with governmental and private stakeholders in the interest of common goals.

4. BENEFITS OF ASSOCIATED MEMBERSHIP

The following benefits are available to associated members of the Red Meat Abattoir Association

- Page on our website
- Listed on our database
- Access to our database
- Opportunity to advertise in our newsletter
- Opportunity to advertise in our diary at preferential rates
- Invitation to our regional workshops
- Invitation and Opportunity to exhibit at our annual conference at preferential rates
- Client referrals



PRICE INFORMATION

T: (012) 349-1238/9

F: (012) 349-1240

www.rmaa.co.za

1. PURPOSE OF PRICE INFORMATION SYSTEM

The RMAA strives to create and maintain an information system containing relevant and historical data essential for planning and development purposes. The primary objective is to timeously release accurate and valid information to the benefit of the South African abattoirs industry. **It is important to ensure a fair representation of the information. The RMAA therefore requests that you, the abattoir owner, commit to submitting your price information as per the procedure described below.**

2. COSTS

The price information report is released once a week. All participating abattoirs will receive a report, free of charge. A fee determined from time to time, is payable by non-participating abattoirs and all subscribers.

3. PROCEDURE

All participants are required to send their prices on a weekly basis to the RMAA before / or on Tuesday mornings 12:00. **All price information will be handled in a confidential way and will not be used for any purposes other than the price information system. The prices of participants who sign annexure A for the JSE contract will be provided to the JSE for audit purposes.** Prices will be analysed and a report compiled, which will be distributed to all participants via fax or e-mail.

Prices can be submitted via the following options:

- Meat Matrix Software (E-mail)
- Standard form (Fax or E-mail) –See attachment
- Excell (Fax or E-mail)
- Abaserve (E-mail)

4. DEFINITIONS

Selling Price: Average price of carcass as directly supplied to Wholesaler (i.e. gate price)

Carcass: Selling price excludes:

- Vat
- Slaughter costs
- Transportation
- Fifth quarter
- Rebates

Hide: Feedlot hides

Veldt hide

Skin: Baster glover skin

Dorper skin

Merino's: Each

A new definition of selling price (excluding rebates) is defined. In order to improve the determination of the selling price it was decided to provide for a calculation of the value of carcasses which is deboned, defatted and provided as pistols.

Abattoirs currently debone a large percentage of carcasses at their own facility. To reflect the price of deboned carcasses more accurately, the transfer price for these hindquarters must be reported in addition to the selling price of sides and forequarters.

The following information regarding beef slaughtered to be supplied:

- **Number of cattle slaughtered for the week**
- **Average selling price of carcasses per classification (i.e. sold as sides)**
- **Average selling price of forequarter per classification**
- **Transfer price and number of hindquarters for deboning**
- **Number of carcasses provided as pistols**
- **Number of carcasses provided as defatted carcasses**

Rebates and transport should remain excluded from the selling price.

Purchase Price: Chilled carcass mass, including the fifth quarter as paid to feedlot or farmers.

Carcass Purchase price excludes:

- Vat
- Transportation
- Commission

5. CONTACT DETAILS

RED MEAT ABATTOIR ASSOCIATION

Phone (012) 349 1237/8/9
 Fax (012) 349 1240
 Postal Address P.O. Box 35889 Menlopark 0102
 Contact person Michelle Coertzen
 E-mail: marketing@maa.co.za

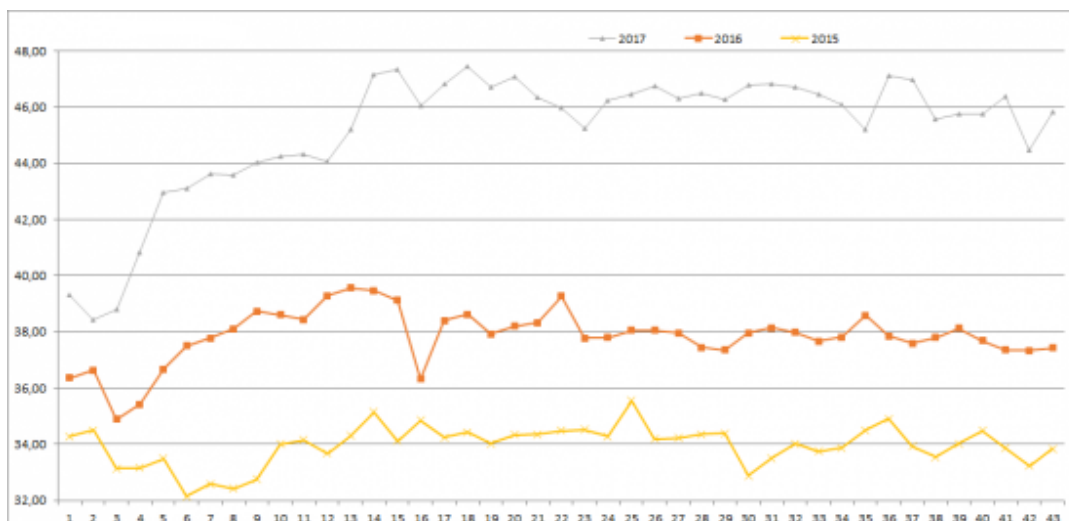
The price information report may not be reproduced or transmitted in any form or by any means, including recording by any information storage and retrieval system, without prior written permission from the RMAA.

The contents of the price information report are for general information only and the RMAA accepts no responsibility or liability whatsoever for any loss, whether it be direct, indirect or consequential, arising from this information. The past monthly data is available on our website.

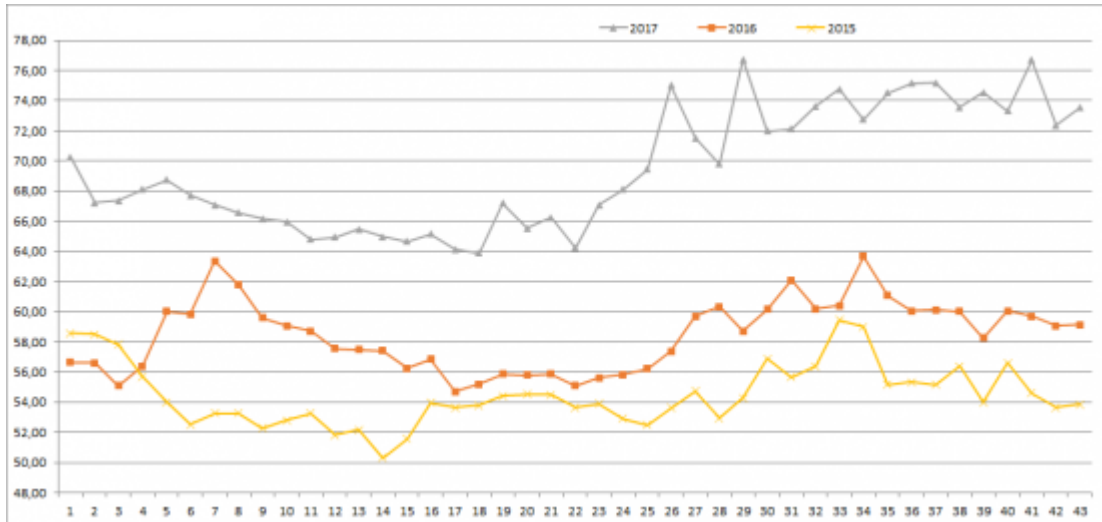
Please make sure that the information that is sent to the RMAA is as per definition determined by the board of the association.

6. COMPARISON GRAPHS

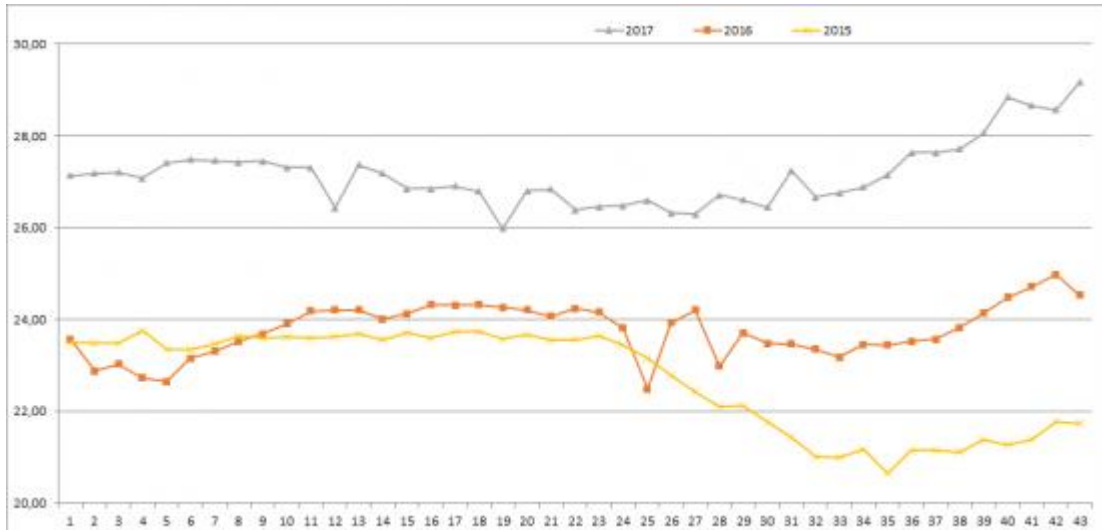
BEEF A2 SALES PRICE 2015 – 2017

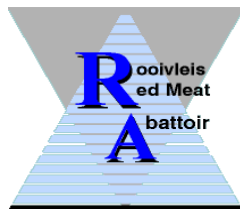


LAMB A2 SALES PRICE 2015 – 2017



65 – 79.99kg O SALES PRICE 2015 – 2017





Vereniging - Association

ASSOCIATED MEMBERSHIP PACKAGE APPLICATION 2018

Note that all applications are subject to managerial approval. Membership fee quoted is calculated pro rate per annum

SERVICE

Associated Membership Package with Price Information Package	R9 330.00	<input type="checkbox"/>
Associated Membership Package:	R7 695.60	<input type="checkbox"/>
Price Information Package Only	R5 130.00	<input type="checkbox"/>

All prices quoted are in ZAR and excluding 14% VAT

COMPANY INFORMATION

Company Name:		VAT No:	
Postal Address:		Physical Address:	
Telephone:	()	Fax:	()
Nature of Business:			
(Please email your company profile to info@rmaa.co.za for website and distribution)			

CONTACT INFORMATION

Company Owner's Name:		Company Owner's Surname:	
Telephone:	()	Fax:	()
Cell:		E-mail:	
Contact Person's Name:		Contact Person's Surname:	
Telephone:	()	Fax:	()
Cell:		E-mail:	

RMAA PAYMENT DETAILS

Kindly complete form and send to info@rmaa.co.za, you will receive an invoice with the exact amount and banking details indicated. For more information please contact Michelle 0123491237/8/9

Would you be interested in:	Exhibiting at/Attending our Annual Conference	<input type="checkbox"/>
	Advertising in the RMAA Annual Diary	<input type="checkbox"/>
	Advertising in the RMAA Newsletter	<input type="checkbox"/>

All prices quoted are in ZAR and excluding 14% VAT – Email to the RMAA info@rmaa.co.za

Office Use:

Approved – GN: _____ Date: _____ Filed: Signed off: System updated: